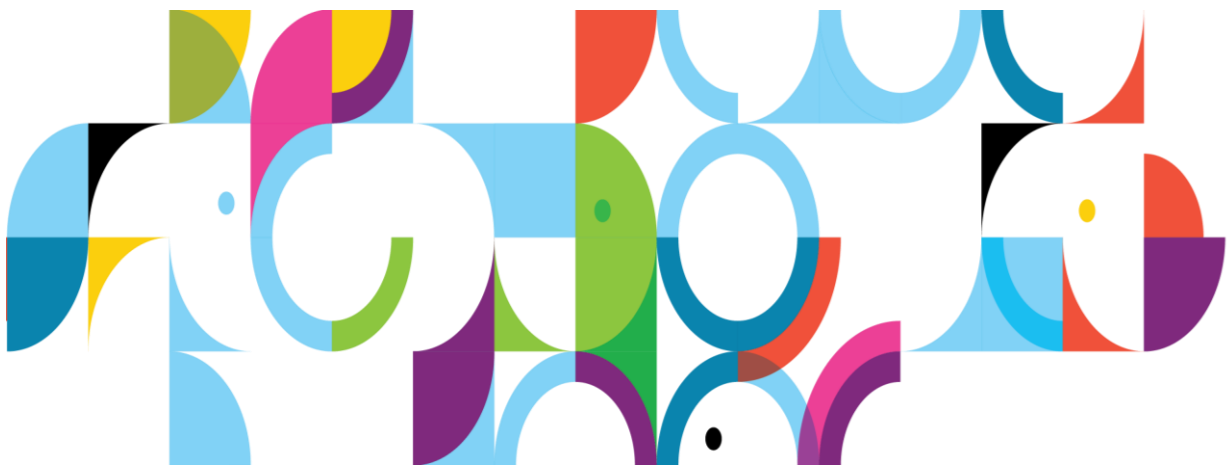


# Upgrade to Connections 6.0 CR6 from Connections 6.0 CR5



# Upgrade to Connections 6.0 CR6

---

## Summary

1	Introduction .....	3
2	Part Numbers & Fixes .....	4
3	Install Connections 6.0 CR6 .....	5
3.1	Upgrade to version 1.8.5 64 bit of Installation Manager .....	5
3.2	Install WebSphere Application Server 8.5.5 FP15 .....	6
3.2.1	Stop all WAS and HTTP processes .....	6
3.2.2	Apply WebSphere Application Server 8.5.5 FP15 .....	6
3.2.3	Restart Deployment Manager and HTTP processes .....	6
3.3	Install Connections 6.0 CR6 .....	7
3.3.1	Prepare Connections 6.0 CR6 repository .....	7
3.3.2	Update Connections to CR6 .....	7
3.3.3	Deploy updated applications .....	19
3.3.3.1	Update the Search Conversion Tool for Multi-Node deployments .....	19
3.3.3.2	Deploy updated applications .....	19
3.3.4	Generate and Propagate the plug-in for the Webserver .....	20
3.3.5	Clean-up temporary folders .....	21
3.3.6	Start Connections .....	21
3.3.7	Post Installation Task .....	21
3.4	Upgrade FileNet components .....	21

# Upgrade to Connections 6.0 CR6

---

## 1 Introduction

This document illustrates the steps followed by one administrator to apply Connections 6.0 CR6 where everything is installed on a single Windows 2012 server. The environment being upgraded is a test environment, so not sized for production. Refer to [Update strategy for Connections 6.0](#) for documentation and other important information.

The installation in this document is from Connections CR5 to Connections CR6. Connections 6.0 CR6 does not require any database updates or FileNet component updates.

### **Important Release Notes for Connections CR6 and previous CRs:**

- End users may experience issues such as the Community Catalog not correctly displayed after a Connections CR deployment. This can be prevented by following the instructions in the technote [Refreshing the browser cache for the end users after Connections CR deployment](#)
- If you use Cognos for Metrics and install WebSphere Application Server 8.5.5.14 on the Cognos server, configure the server to use JDK v7.1 as explained in the technote, [Connections 6.0 Metrics with Cognos and WebSphere Application Server 8.5.5.14](#)
- Additional steps are required for performing a Rollback for Connections CRs. Refer to the following technotes for additional information:
  - [Article KB0072754](#) for instructions to perform a Rollback for Connections 6.0 CR5
  - [Article KB0022241](#) for instructions to perform a Rollback for Connections 6.0 CR4
  - [Article KB0022220](#) for instructions to perform a Rollback for Connections 6.0 CR3
  - [Article KB0022194](#) for instructions to perform a Rollback for Connections 6.0 CR2
  - [Article KB0022036](#) for instructions to perform a Rollback for Connections 6.0 CR1 with Metrics
- As of Connections 6.0 CR3 Communities now integrates a subset of Connections Engagement Center features, collectively known as the "Highlights app." This app can be customized to retrieve community content and present it to fit the needs of your community. To make this possible, CR3 installs the Highlights app on the same cluster as the Communities app. If ICEC was previously deployed on a different server, the CR3 install will move it to the Communities cluster to ensure that the Highlights app functions properly.

# Upgrade to Connections 6.0 CR6

## 2 Part Numbers & Fixes

The following fixes have been downloaded:

1. IBM WebSphere Application Server Network Deployment V8.5.5 Fix Pack 15  
[Technote 0871944](#) . (same requirement as Connections CR5)

Download Description	Platform	Download Links (Fix Central)
Application Server local repository ZIP files for Base, Express, ND, Developers, NDDMZ (Default with Java SDK 8) *	Distributed	<a href="#">8.5.5-WS-WAS-FP015-part1.zip</a> & <a href="#">8.5.5-WS-WAS-FP015-part2.zip</a> & <a href="#">8.5.5-WS-WAS-FP015-part3.zip</a>

Download Description	Platform	Download Links (Fix Central)
Supplements local repository ZIP files containing Application Client, Web server plug-ins, Pluggable Application Client, IBM HTTP Server **	Distributed	<a href="#">8.5.5-WS-WASSupplements-FP015-part1.zip</a> & <a href="#">8.5.5-WS-WASSupplements-FP015-part2.zip</a> & <a href="#">8.5.5-WS-WASSupplements-FP015-part3.zip</a>

**Important:** WAS 8.5.5.15 requires an iFix for [APAR IFPH09407](#) which can be download from Fix Central.

Download the recommended Java SDK 8.0.5.27:

[IBM WebSphere Java SDKs for WebSphere Application Server 8.5.5.15](#) →

**NOTE:** Upgrading IBM WebSphere to the latest recommended update is optional and not mandatory when deploying a Connections CR. By deploying the latest WAS fixpack it prevents the occurrence of known issues in your environment, increasing stability and minimizing downtime.

2. Connections 6.0 requirements for IBM FileNet for use with Connections Content Manager (CCM) (No updates for Connections CR2 and above)

**Download table for Connections IFR1\CR1:**

FileNet Component	AIX	Linux	Windows
FileNet Content Engine Server	<a href="#">5.2.1.7-P8CE-AIX-FP007</a>	<a href="#">5.2.1.7-P8CPE-LINUX-FP007</a>	<a href="#">5.2.1.7-P8CPE-WIN-FP007</a>
FileNet Content Engine Client	<a href="#">5.2.1.7-P8CPE-Client-AIX-FP007</a>	<a href="#">5.2.1.7-P8CPE-Client-Linux-FP007</a>	<a href="#">5.2.1.7-P8CPE-Client-WIN-FP007</a>
IBM Content Navigator (FileNet Collaboration Services (FNCS))	<a href="#">2.0.3-ICN-FP008-AIX</a>	<a href="#">2.0.3-ICN-FP008-LINUX</a>	<a href="#">2.0.3-ICN-FP008-WIN</a>

**\*\* Connections CR1 does not require an update to ICN however there is a requirement to have the binary file available to update the FNCE Client.**

# Upgrade to Connections 6.0 CR6

---

3. Installation Manager 1.8.5 or future fix packs (No updates since Connections)

[Technote 7025142](#)

4. Connections 6.0 CR6

Download Connections 6.0 CR6 from the [HCL FlexNet portal](#)

5. It is assumed that all installation packages have been copied into the folder **C:\Install\Connections-CR** with the following folder structure:

- IM (if needed)
- WAS (if needed)
  - o 8.5.5-WAS-WAS-FP15
  - o 8.5.5-S-WASSupplements-FP15
  - o 8.0.5.27-WAS-IBMWASJAVA
- FILENETCR (This is not required when upgrading from Connections 6.0 CR2 and above)

## 3 Install Connections 6.0 CR6

This step will guide you through the installation of Connections 6.0 CR6.

This installation mainly consists on the four following steps:

1. Upgrade to the latest version of Installation Manager (if needed)
2. Upgrade to WebSphere Application Server 8.5.5.15 / SDK 8.0.5.27 including the iFix for APAR IFPH09407 (if needed)
3. Install Connections 6.0 CR6
4. Apply FileNet Updates (This is not required when upgrading from Connections CR2 or above)

### 3.1 Upgrade to version 1.8.5 64 bit of Installation Manager

If your server hasn't upgraded to IM 1.8.5 64 bit or future fix packs, please do so.

# Upgrade to Connections 6.0 CR6

---

## 3.2 Install WebSphere Application Server 8.5.5 FP15

If your server hasn't been upgraded to WAS 8.5.5.15 and JAVA SDK WAS 8.0.5.27, it is recommended but not required to upgrade WAS.

**Important:** WAS 8.5.5.15 requires an iFix for [APAR IFPH09407](#) which can be download from IBM Fix Central.

If you use Cognos for Metrics and install WebSphere Application Server 8.5.5.14 on the Cognos server, configure the server to use JDK v7.1 as explained in the technote, [Connections 6.0 Metrics with Cognos and WebSphere Application Server 8.5.5.14](#)

### 3.2.1 Stop all WAS and HTTP processes

To stop all WAS processes, open a Command prompt window then issue the following commands:

```
cd C:\IBM\WebSphere\AppServer\profiles\AppSrv01\bin
stopServer.bat Connections_server1 -username wasadmin -password password
stopNode.bat -username wasadmin -password password
```

```
cd C:\IBM\WebSphere\AppServer\profiles\Dmgr01\bin
stopManager.bat -username wasadmin -password password
```

Stop all Java processes on the system that might be locking files

Stop the HTTP services:

- IBM HTTP Administration for WebSphere Application Server V8.5
- IBM HTTP Server V8.5

### 3.2.2 Apply WebSphere Application Server 8.5.5 FP15

- Run Installation Manager and update the WebSphere Application Server to 8.5.5.15 and the JAVA SDK to 8.0.5.27.
- Apply the iFix for APAR IFPH09407 to WAS 8.5.5.15

### 3.2.3 Restart Deployment Manager and HTTP processes

To start Deployment Manager, open a Command prompt window then issue the following commands:

# Upgrade to Connections 6.0 CR6

```
cd c:\IBM\WebSphere\AppServer\profiles\Dmgr01\bin
startManager.bat
```

Start the HTTP services:

- IBM HTTP Administration for WebSphere Application Server V8.5
- IBM HTTP Server V8.5

## 3.3 Install Connections 6.0 CR6

### 3.3.1 Prepare Connections 6.0 CR6 repository

Go to **C:\Install\Connections-CR\**

Unzip the file **Conn6\_CR6** into the same folder.

Local Disk (C:) > Install > Connections-CR > Conn6_CR6			
Name		Date modified	Type
base		9/19/2019 3:22 PM	File folder
delta		9/19/2019 3:22 PM	File folder
servicedelta		9/19/2019 3:22 PM	File folder
updates		9/19/2019 3:22 PM	File folder

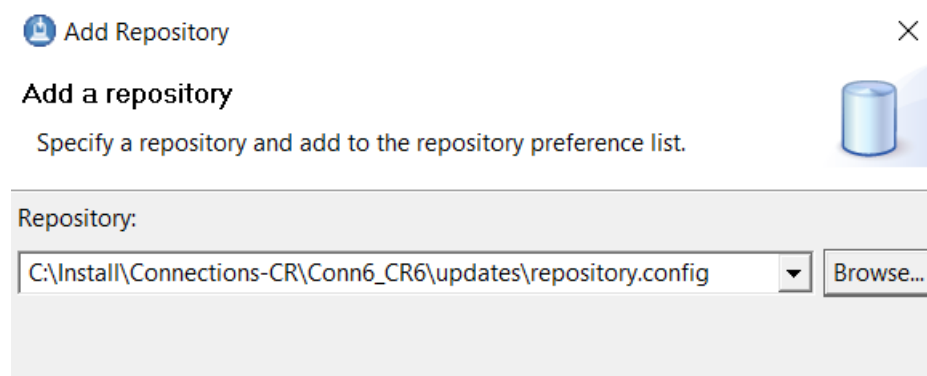
### 3.3.2 Update Connections to CR6

In the Installation Manager and select **File** then **Preferences...**

Add the following repository:

**C:\Install\Connections-CR\Conn6\_CR6\Updates\repository.config**

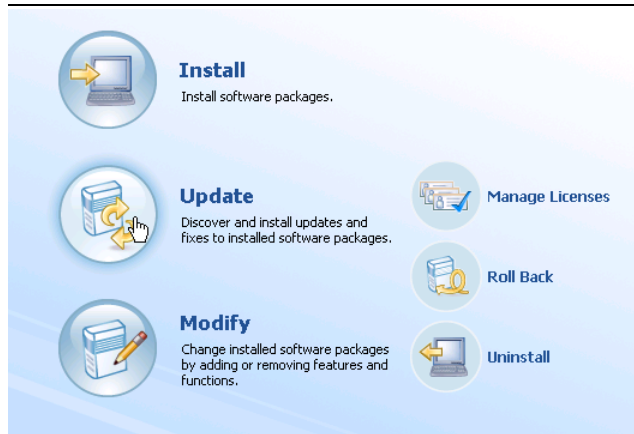
Click **OK**.



Click **Update**.

# Upgrade to Connections 6.0 CR6

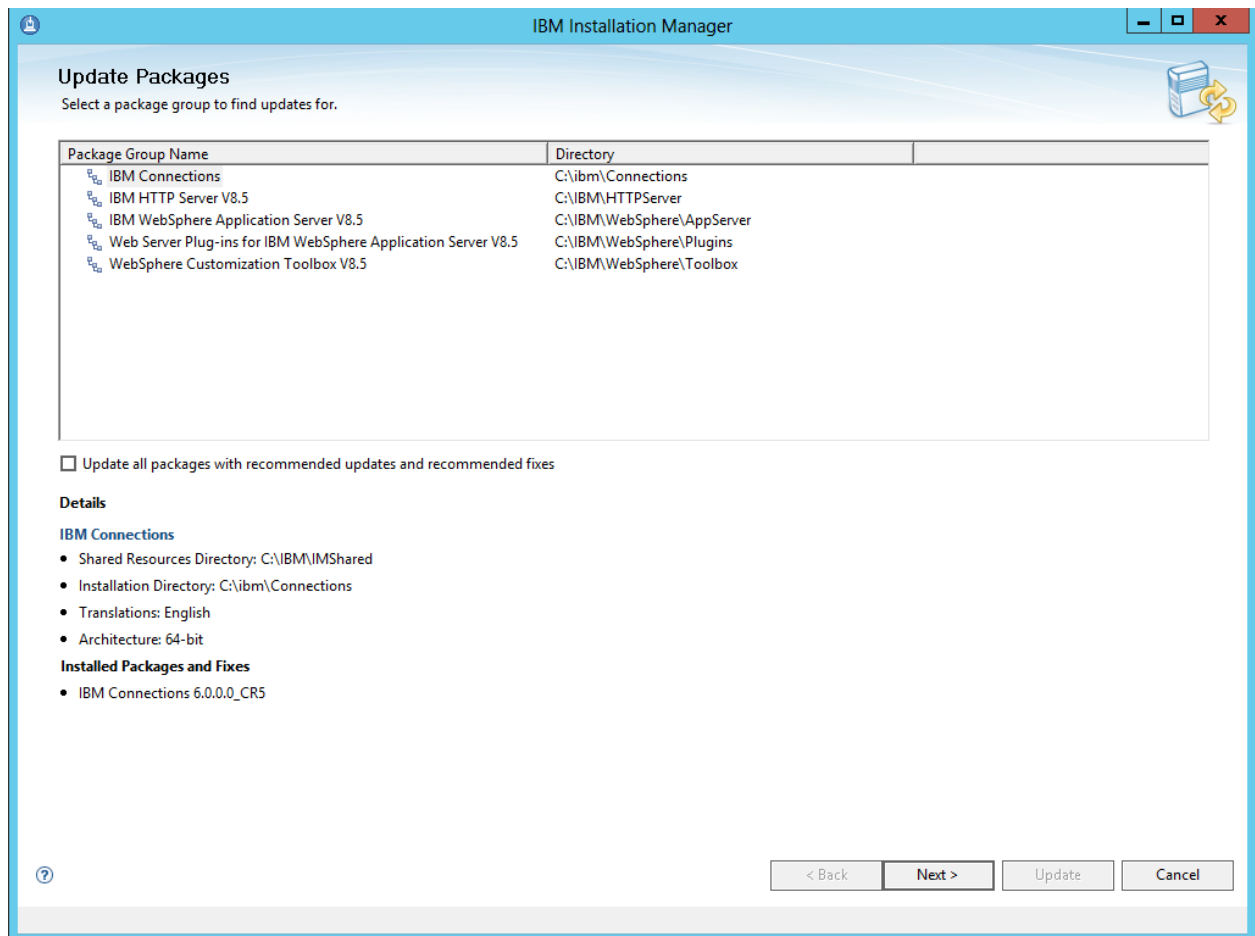
---





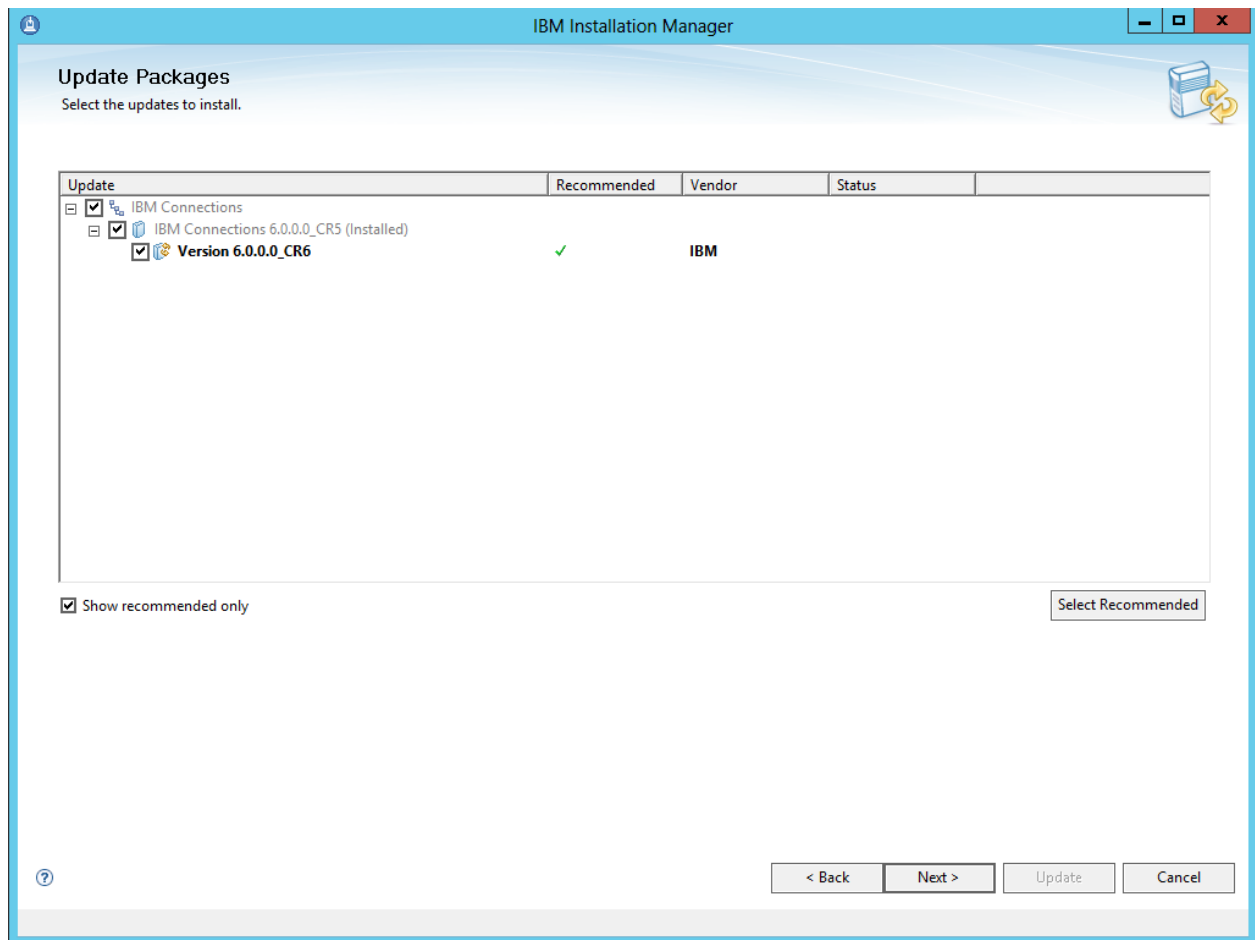
# Upgrade to Connections 6.0 CR6

Select **Connections** then click **Next**.



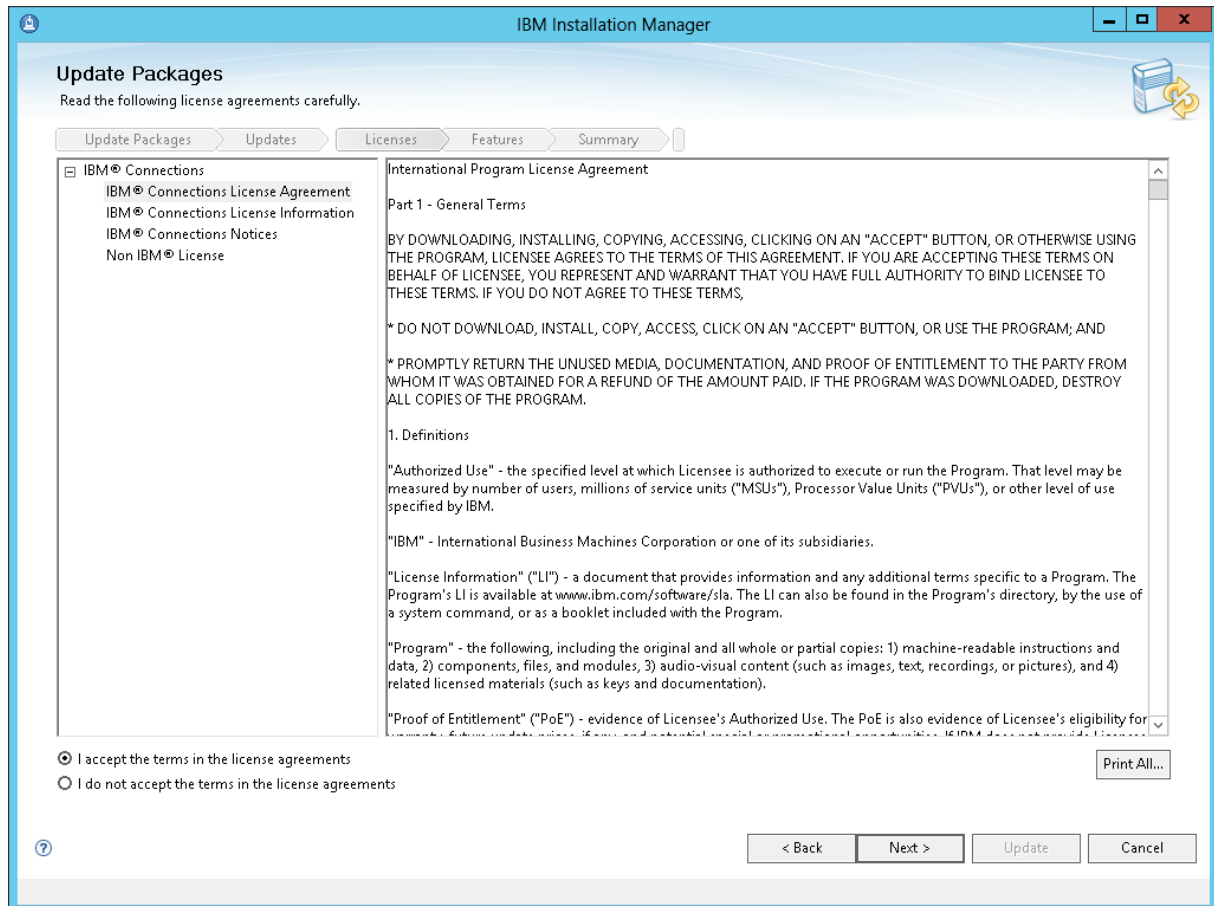
# Upgrade to Connections 6.0 CR6

Check that **Version 6.0.0.0\_CR6** is displayed then click **Next**.



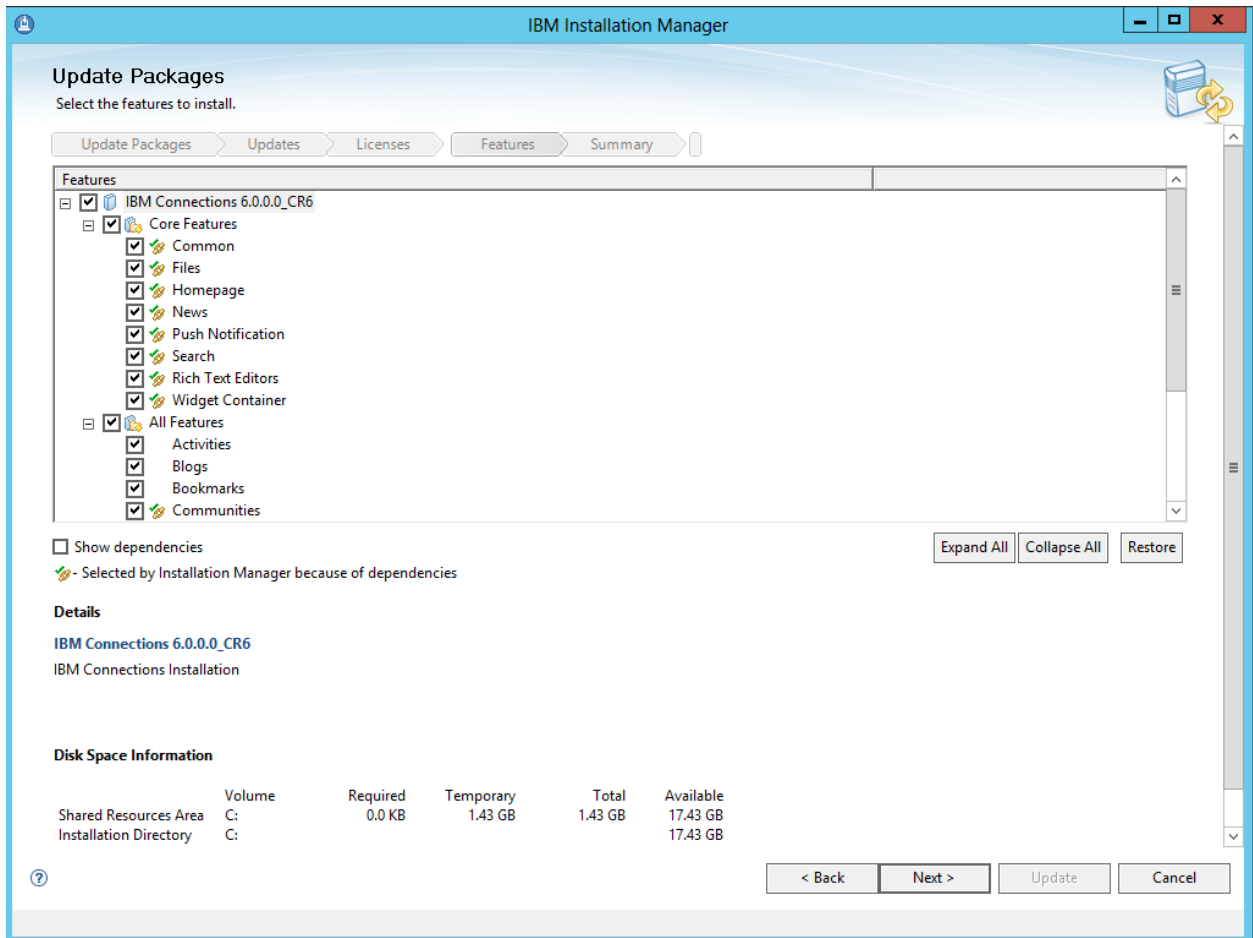
# Upgrade to Connections 6.0 CR6

Accept the license terms and click **Next**.



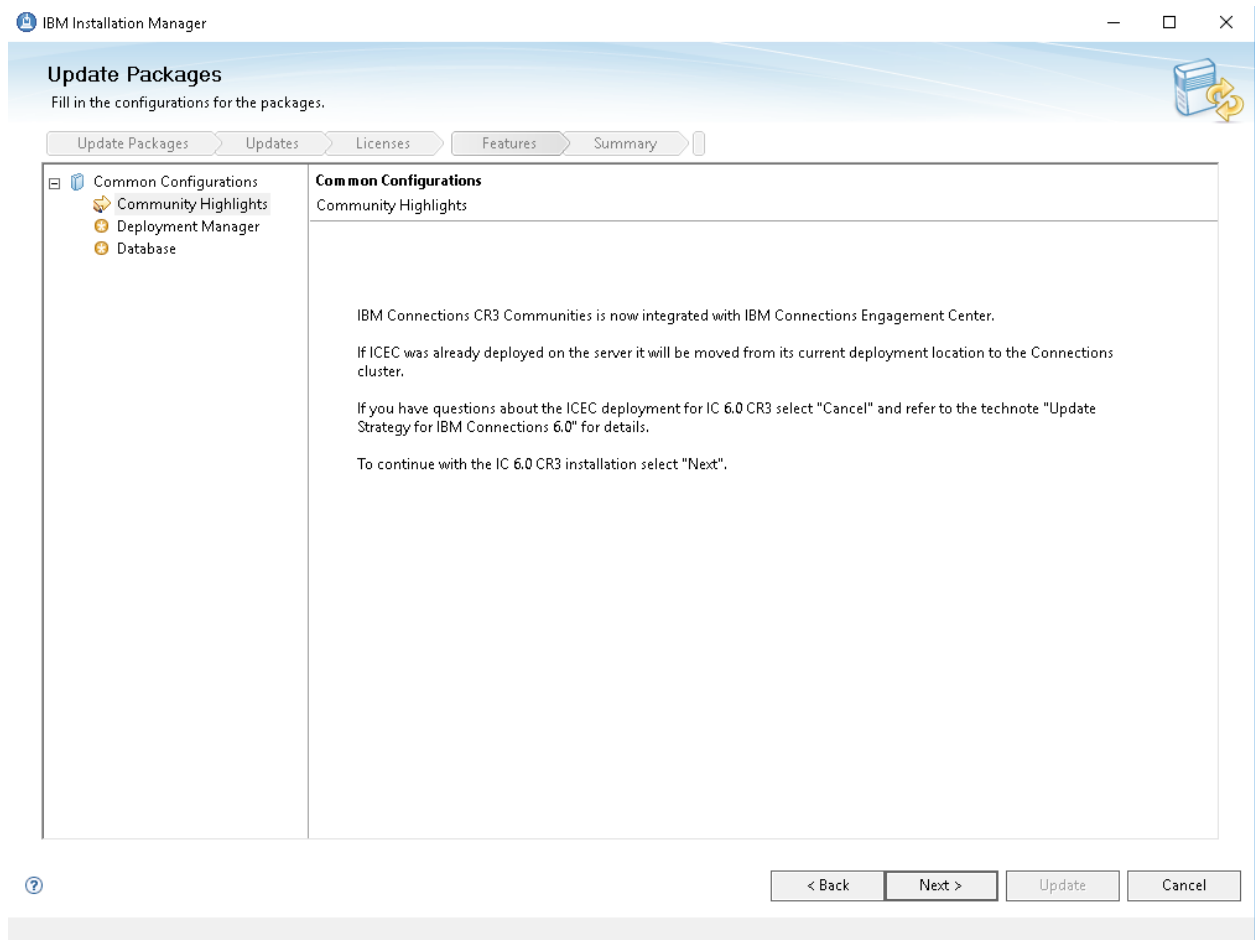
# Upgrade to Connections 6.0 CR6

Ensure that **ALL** applications are selected then click **Next**.



# Upgrade to Connections 6.0 CR6

(This screen will only be displayed when upgrading from Connections CR2 or earlier) Review the informational screen regarding the new Highlights Community widget. Click **Next** to continue with the install.



# Upgrade to Connections 6.0 CR6

Enter the administrative id and password then click **Validate** then **OK**. When the Validation is successful, click **Next**.

IBM Installation Manager

## Update Packages

Fill in the configurations for the packages.

Update Packages | Updates | Licenses | Features | Summary

- Common Configurations
  - Community Highlights
  - Deployment Manager
  - Database

### Common Configurations

#### Deployment Manager

#### WebSphere Application Server Selection

Installation location:

Deployment manager profile:

Host name:

#### Deployment Manager Credentials

These credentials must exist for the selected Profile.

Administrator user ID:

Administrator password:

Validate credentials before proceeding.

< Back | Next > | Update | Cancel

### Information Dialog

Validation successful.

# Upgrade to Connections 6.0 CR6

**(This screen will only be displayed when upgrading from Connections CR2 or earlier)** Enter the username and password that was defined in the script that was used to create the XCC database. Click **Validate** then **OK**. When the Validation is successful, click **Next**.

IBM Installation Manager

## Update Packages

Fill in the configurations for the packages.

Update Packages Updates Licenses Features Summary

- Common Configurations
  - Community Highlights
  - Deployment Manager
  - Database

### Common Configurations

#### Database

##### Database Location

Are all IBM Connections applications using the same database instance?

☒ Yes, the applications are on the same database instance.

☐ No, the applications are not on the same database instance.

If you return to this page during installation, your settings remain but are not visible. To change a settings, you must enter all of the information again. If you do not want to change them, click Next.

##### Database Type

DB2 Universal Database(TM)

##### Database Server

Host name:

Port:


JDBC driver location:

##### Database Credentials

☐ Use the same password for all applications.

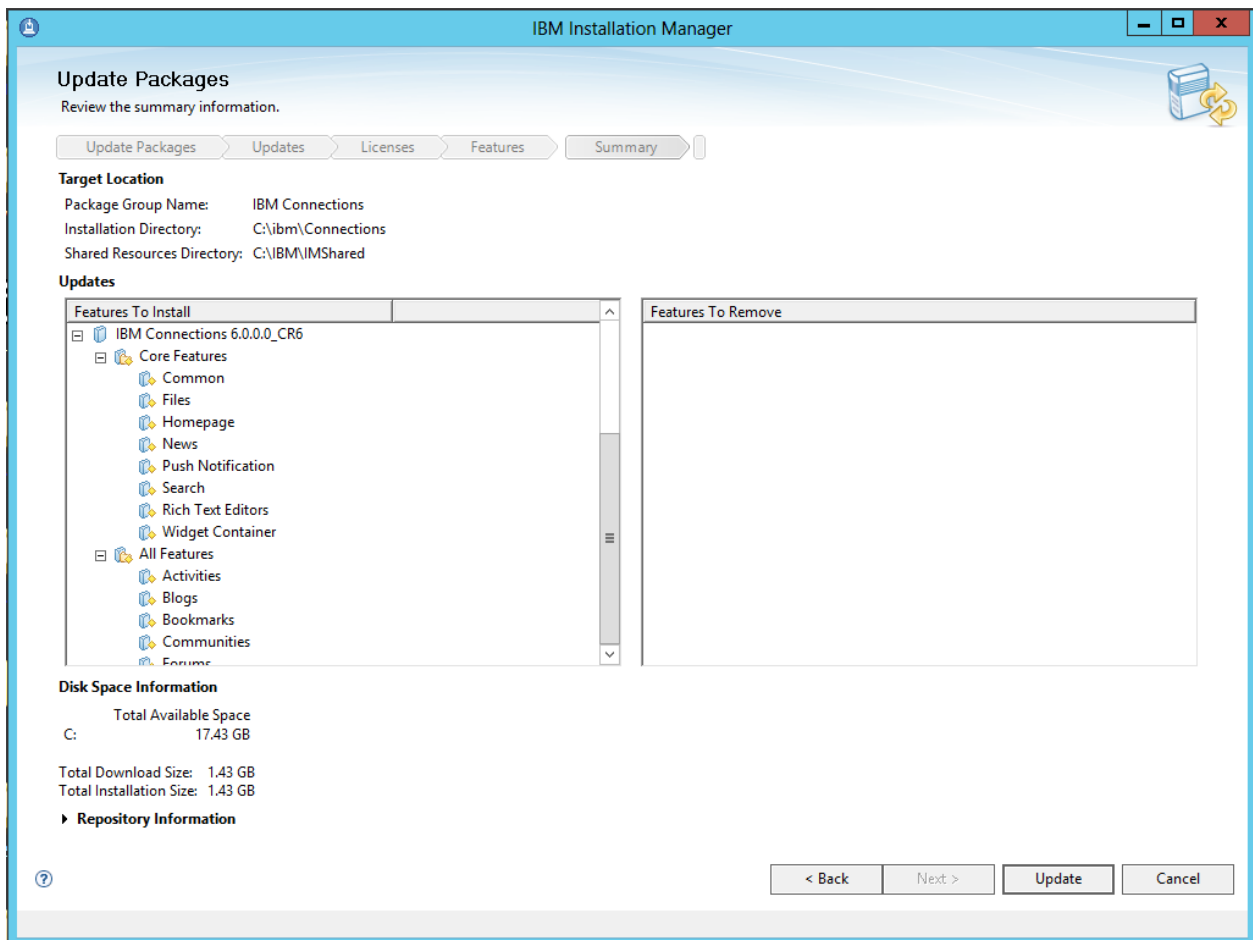
Application	Database Name	User ID	Password
Community Highlights	XCC	LCUSER	*****

Information Dialog

 Validation successful.

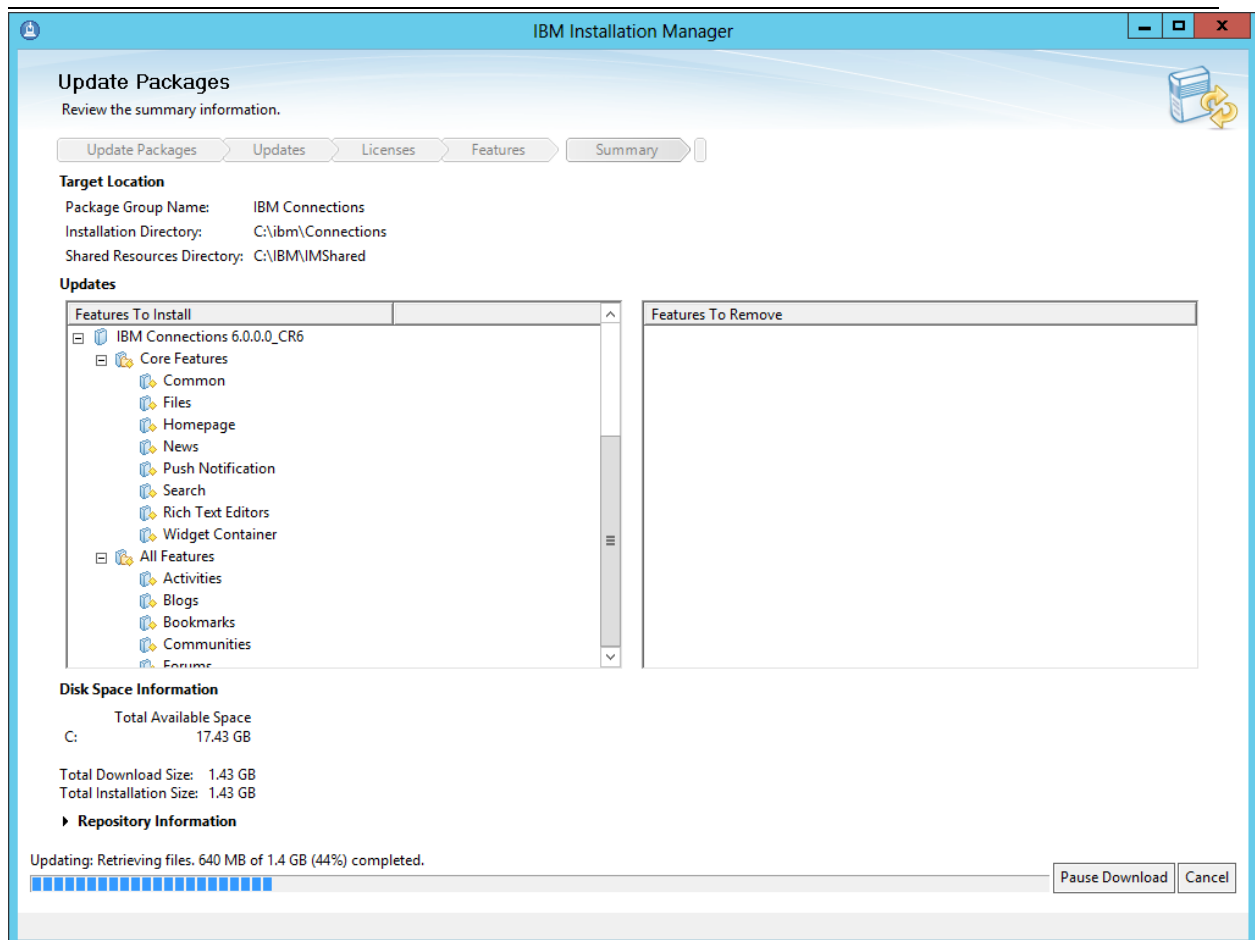
# Upgrade to Connections 6.0 CR6

Click the **Update** button and begin the installation





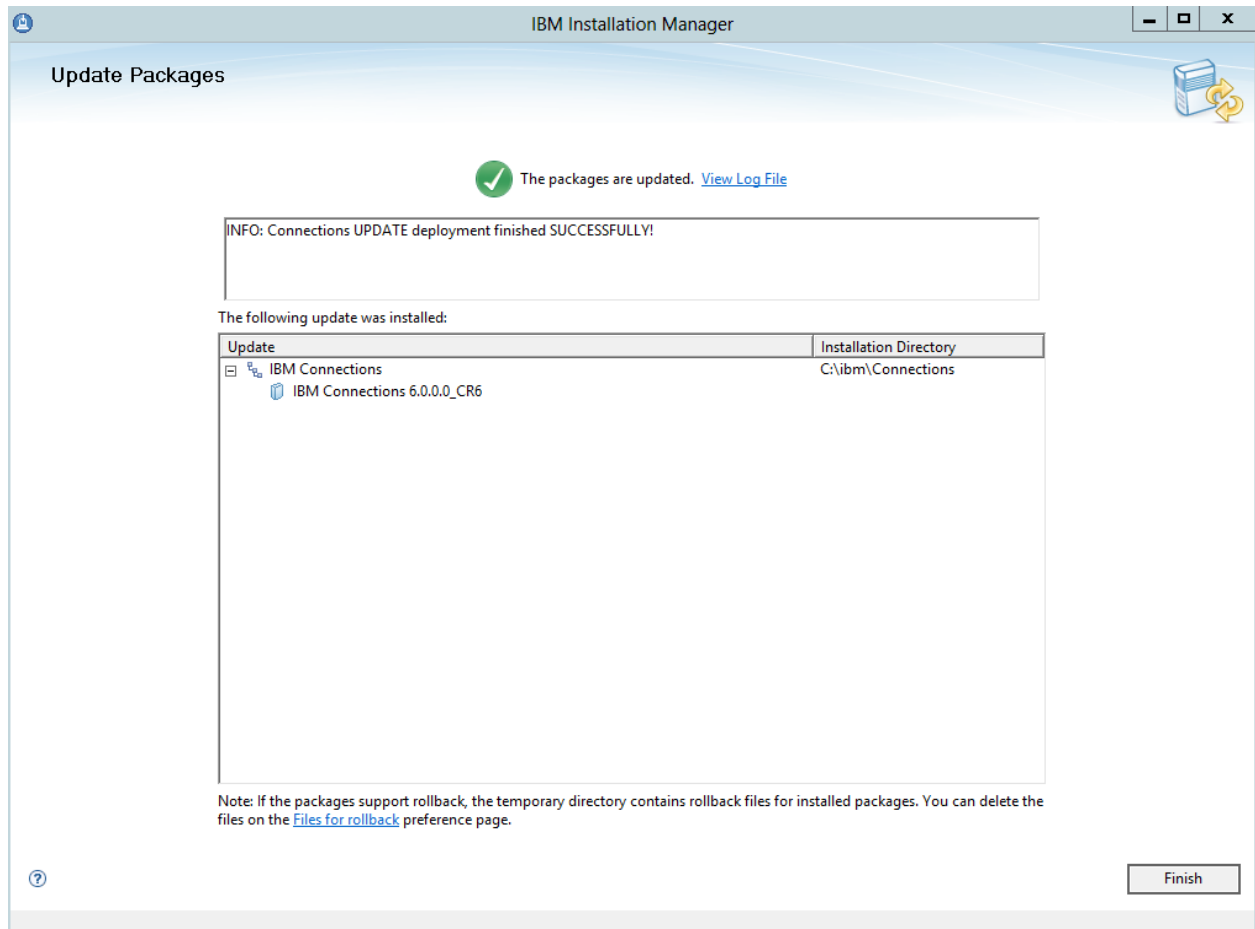
# Upgrade to Connections 6.0 CR6



# Upgrade to Connections 6.0 CR6

---

Click **Finish**



Close the **Installation Manager**.

# Upgrade to Connections 6.0 CR6

---

## 3.3.3 Deploy updated applications

### 3.3.3.1 Update the Search Conversion Tool for Multi-Node deployments

**Note:** This section can be skipped if upgrading from IC6.0 CR4 or higher

Connections CR4 updates the Search Conversion Tool (Sellent) and Multi-Node Deployments require an additional step to copy the updates to the local nodes. Refer to the instructions in the following topics:

- [Copying Search conversion tools to local nodes for AIX and Linux](#)
- [Copying Search conversion tools to local nodes for Windows](#)

### 3.3.3.2 Deploy updated applications

Open a Command prompt window then issue the following commands:

```
cd c:\IBM\WebSphere\AppServer\profiles\AppSrv01\bin  
startNode.bat
```

This will deploy all Connections applications to Connections node.

You can check if updated applications are deployed by going to

**C:\IBM\WebSphere\AppServer\profiles\AppSrv01\installedApps\connections6Cell01.**

The modification date of applications should be updated to the current date/time.

Verify that the CR was successfully installed. Go to \IBM\Connections and open Version.txt to confirm the CR build number.

Connections CR6 build number: IC6.0\_CR6\_Connections\_20190917-2058

**Wait for the CPU activity to be flat before going further.**

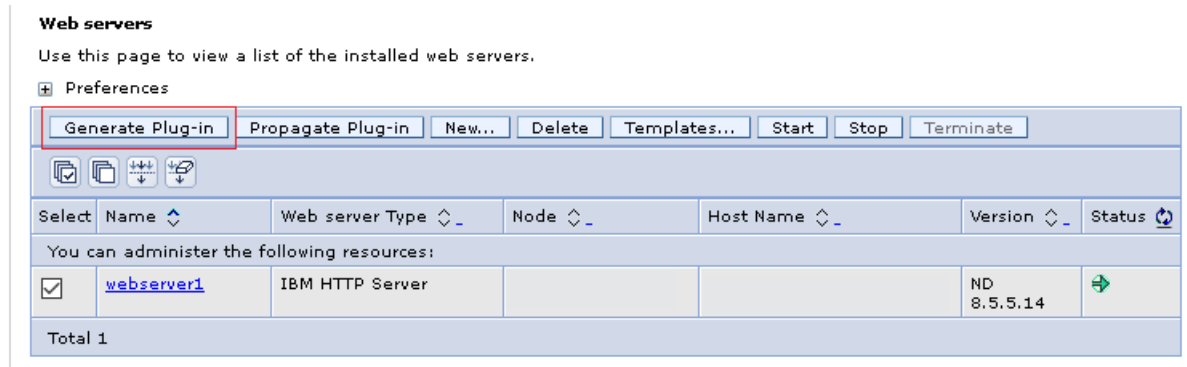
# Upgrade to Connections 6.0 CR6

## 3.3.4 Generate and Propagate the plug-in for the Webserver

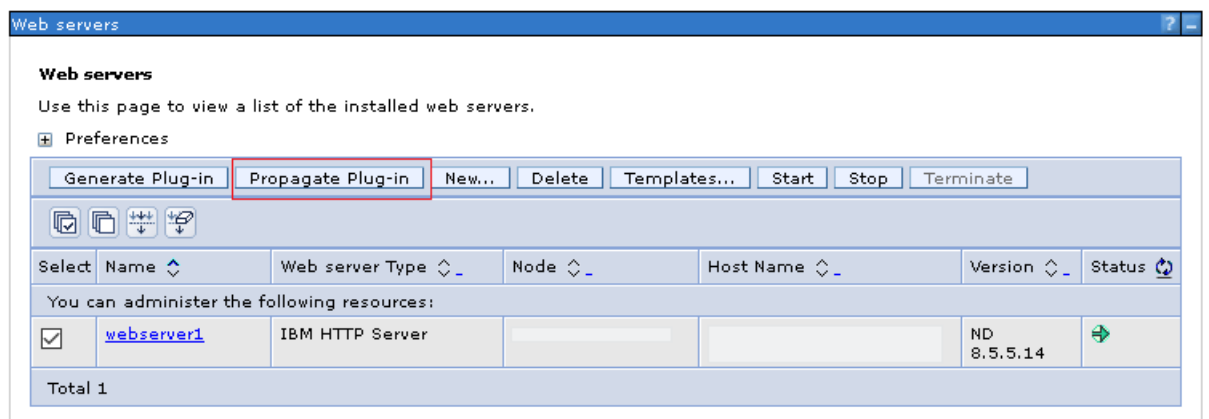
Open the WebSphere Integrated Solutions Console and click Servers > Server Types > Webservers.



Select the Webserver, click Generate Plug-in, and wait for the plug-in to be generated.



Select the Webserver again and click Propagate Plug-in.



# Upgrade to Connections 6.0 CR6

---

## 3.3.5 Clean-up temporary folders

**Note:** This is an important step and must be completed

Open a Command prompt window then issue the following commands:

```
cd c:\IBM\WebSphere\AppServer\profiles\AppSrv01\bin
stopNode.bat -username wasadmin -password password
```

Remove temporary WebSphere Application Server directories such as the app\_server\_root/profiles/AppSrv01/temp directory.

Remove the contents of the folder **temp**

Start the node agent and resync the applications

```
cd c:\IBM\WebSphere\AppServer\profiles\AppSrv01\bin
startNode.bat
```

**Note:** It is important to resync the applications prior to starting the application server

Perform a full synchronization to push the update to all nodes.

**Wait for the CPU activity to be flat before going further.**

## 3.3.6 Start Connections

Open a Command prompt window then issue the following commands:

```
cd c:\IBM\WebSphere\AppServer\profiles\AppSrv01\bin
startServer.bat Connections_server1
```

## 3.3.7 Post Installation Task

End users may experience issues such as the Community Catalog not correctly displayed after a Connections CR deployment. This can be prevented by following the instructions in the technote [Refreshing the browser cache for the end users after Connections CR deployment](#)

## 3.4 Upgrade FileNet components

No updates required for the FileNet components.

**Congratulations! You have upgraded Connections 6.0 CR5 to CR6!**