



HCL Domino

HCL Domino 11.0.1 Cookbook

September 2020

© Copyright HCL Technologies Domino 2020 . All rights reserved

Contents

Abstract	3
Windows	
I. How to install HCL Domino v11.0.1 on Windows Server Environment	4
i. Introduction.....	4
ii. Download Information.....	4
iii. System Requirement.....	4
iv. Procedure on how to Install.....	6
v. common Issues.....	18
II. How to upgrade HCL Domino v9.0.1 to HCL Domino v11.0.1 on Windows Server Environment.....	19
i. Introduction.....	19
ii. Download Information.....	19
iii. System Requirement.....	19
iv. Procedure for upgrade.....	20
v. Common Issues.....	26
III. How to un-install HCL Domino v11.0.1 on Windows Server Environment.....	27
i. Introduction.....	27
ii. Procedure for Uninstallation.....	27
iii. Common issues when uninstalling Domino windows server environment.....	32
Linux	
I. How to Install HCL Domino Server v11.0.1 on Red Hat Enterprise Linux (RHEL) System.....	33
i. Introduction.....	33
ii. Download Information.....	33
iii. System Requirement.....	33
iv. Procedure on how to Install.....	35
v. Common issues when installing Domino on Linux.....	37
II. How to Upgrade HCL Domino v10.0.1 to v11.0.1 on Red Hat Enterprise Linux.....	39
i. Introduction.....	39
ii. Download Information.....	39
iii. System Requirements.....	39
iv. Preparation on Upgrade.....	40
v. Common Issues on Domino upgrade.....	44
III. How to Uninstall HCL Domino Server v11.0.1 to Red Hat Enterprise Linux.....	46
i. Introduction.....	46
ii. How to Uninstall.....	46
IBMi	
I. How to Install HCL Domino Server v11.0.1 to IBMi System using RSTLICPGM.....	49
i. Introduction.....	49
ii. Download Information.....	49
iii. System Requirements.....	49
iv. Procedure on how to Install.....	51
v. Common issues when installing Domino on IBMi.....	53
II. How to Upgrade HCL Domino Server to v11.0.1 in IBMi Systems.....	54
i. Introduction.....	54
ii. Download Information.....	54
iii. System Requirements.....	54
iv. Upgrade Procedure.....	56
v. Common issues when upgrading Domino on IBMi.....	57
III. How to Uninstall HCL Domino Server v11.0 on IBMi System using CFGDOMSVR.....	58
i. Introduction.....	58
ii. Preparation to Uninstall.....	58
iii. How to Uninstall.....	58
IV. Migration of Domino Server from One Machine to Another.....	59
i. OS Level Method.....	59
ii. Replication Method.....	60
V. Conclusion.....	63
VI. References.....	63
VII. Authors.....	64

Abstract: This white paper addresses the issues most frequently reported by customers to HCL Technical Support regarding Domino® server deployment. The goal of this document is to enable Domino Administrators who are relatively new to the Domino products to help themselves with specific Domino installation and upgrade questions. In short, this is a "how to" guide (cookbook) for Domino install, setup, and upgrade tasks.

How to install HCL Domino v1101 on Windows Server Environment

I. Introduction

Windows Server is one of the pioneer operating system environment for installation of Domino server. Our goal of this cookbook is to show how the Domino v1101 install on Windows Server Environment.

I. Download Information

Download the file from flexnet.

<https://hclsoftware.flexnetoperations.com/flexnet/operationsportal/logon.do>

II. System Requirements

https://support.hcltechsw.com/csm?id=kb_article&sysparm_article=KB0077033

Operating Systems

OS	Hardware	Bitness
Windows Server 2019 Standard Edition	x86-64	64-exploit
Windows Server 2019 Datacenter Edition	x86-64	64-exploit
Windows Server 2016 Standard Edition	x86-64	64-exploit
Windows Server 2016 Datacenter Edition	x86-64	64-exploit
Windows Server 2012 R2 Standard Edition	x86-64	64-exploit
Windows Server 2012 R2 Datacenter Edition	x86-64	64-exploit

Components	Requirement	Applicable OS
Server-128 bit	2GB minimum. 4 or more drives recommended.	Applies to all operating systems supported by the deliverable.
Server-64 bit	1.5 GB minimum Disk swap space: Same amount as physical RAM required 2 times the physical RAM recommended	Applies to all AIX, Linux operating systems supported by the deliverable
Server-64 bit	1.5 GB minimum per partition Disk swap space: 2 times the physical RAM installed Note: Installing Domino 11.0.1 on Windows requires a minimum of 3GB of disk space.	Applies to all Windows operating systems supported by the deliverable

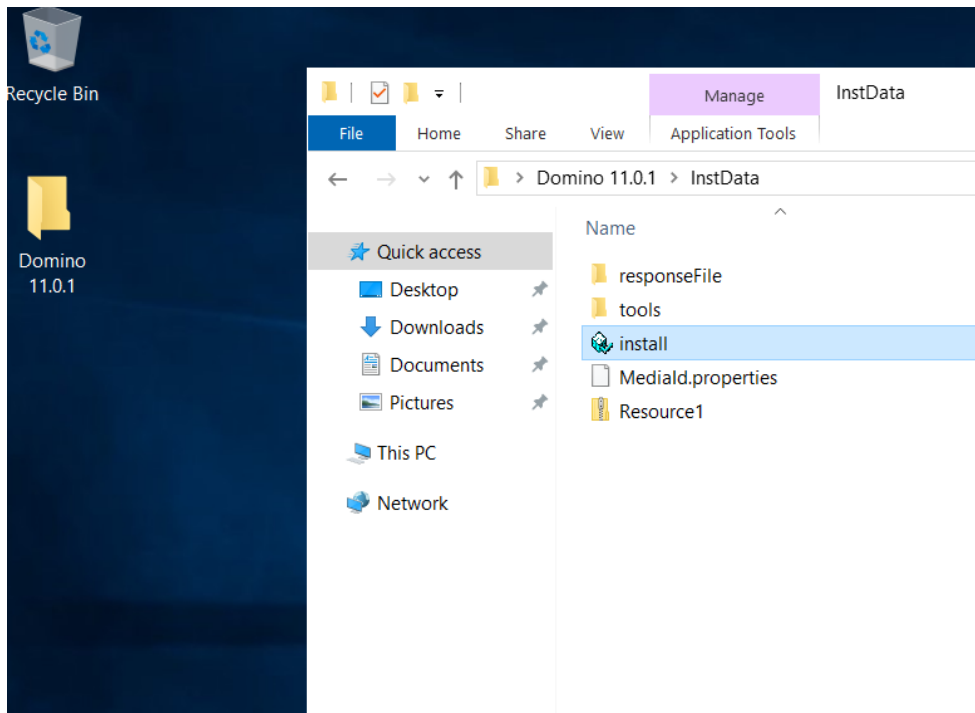
HARDWARE:

Disk Space and memory

Components	Requirement	Applicable OS
Server-128 bit	512 MB minimum 512 MB or more recommended per Domino server	Apply to all operating systems supported by the deliverable
Server-64 bit	512 MB Minimum 512 MB or more recommended per CPU	Apply to all operating systems supported by the deliverable

III. Procedure on how to Install

STEP 1: Download the Installer and place on the desired operating system.

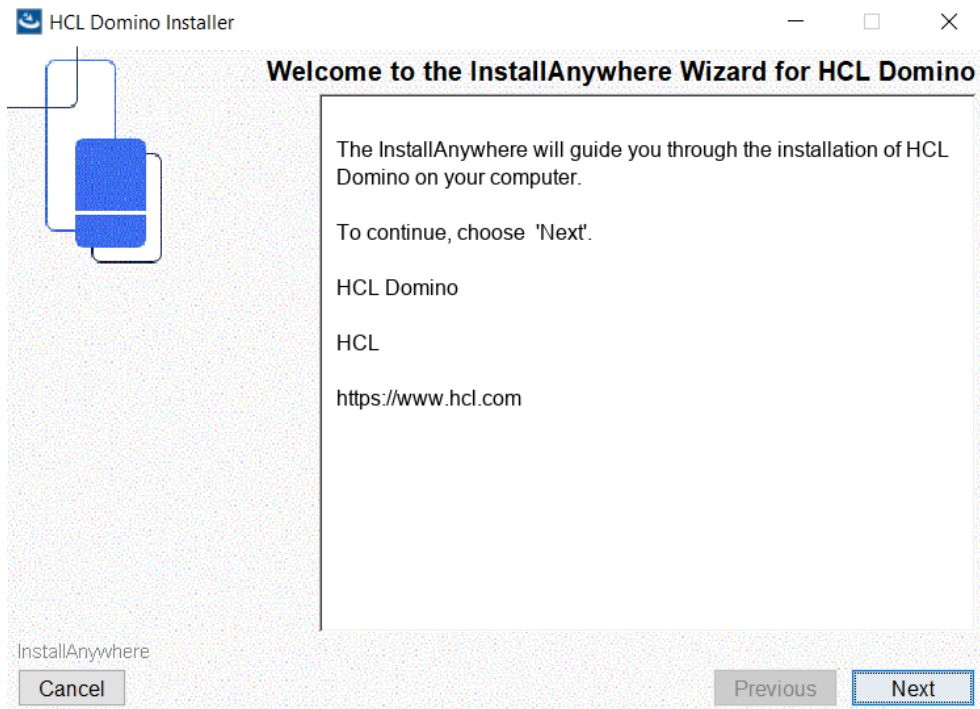


STEP 2: Extract and open the Install.exe and click OK.

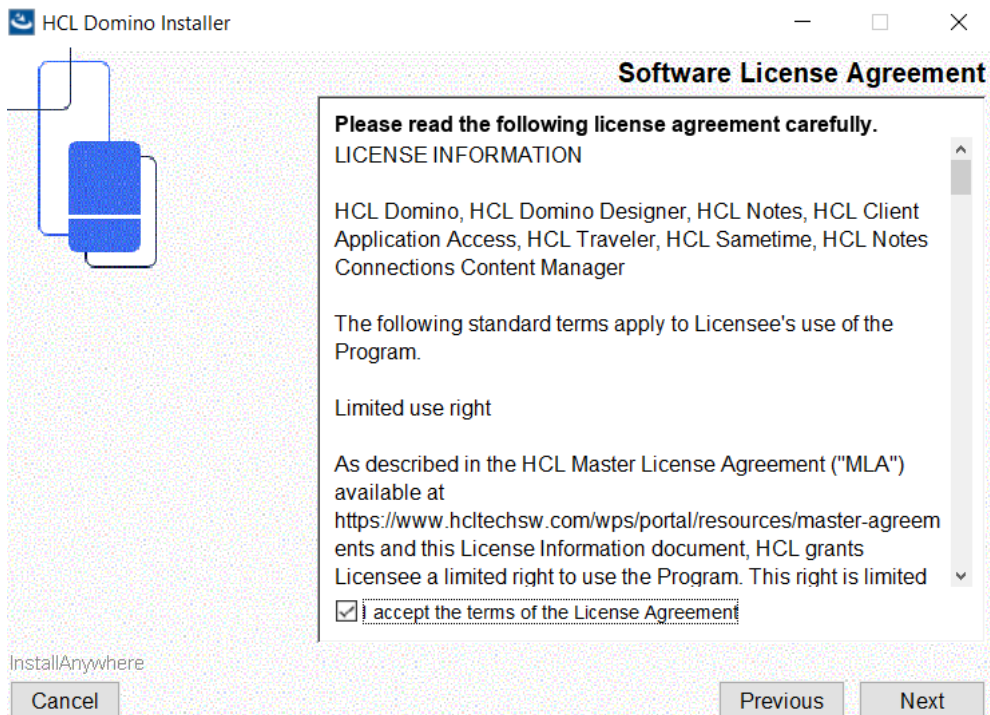
A.



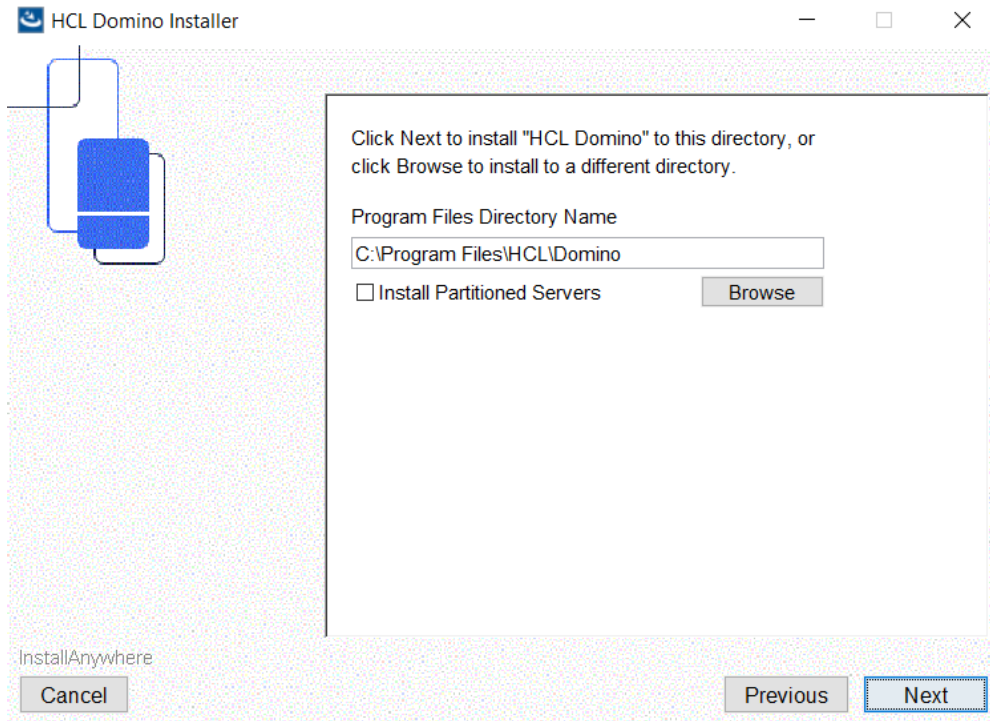
B.



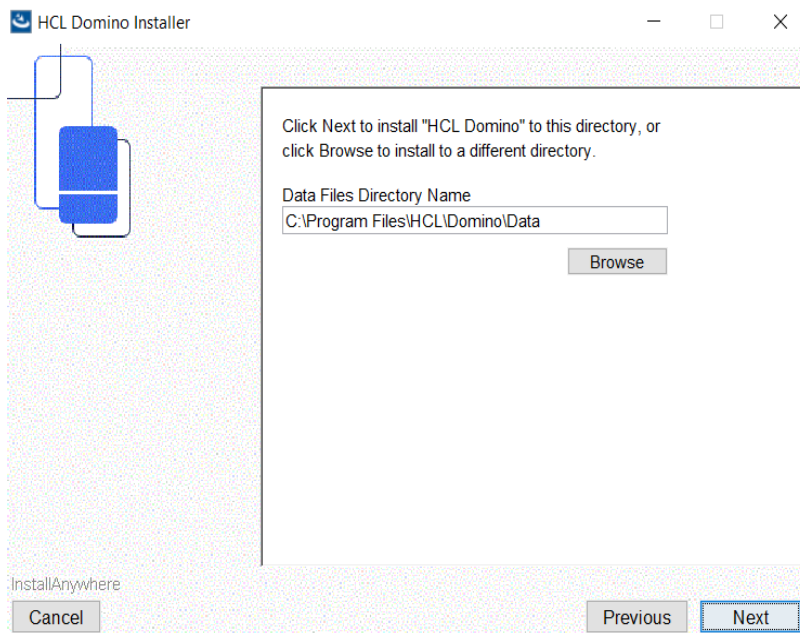
C.



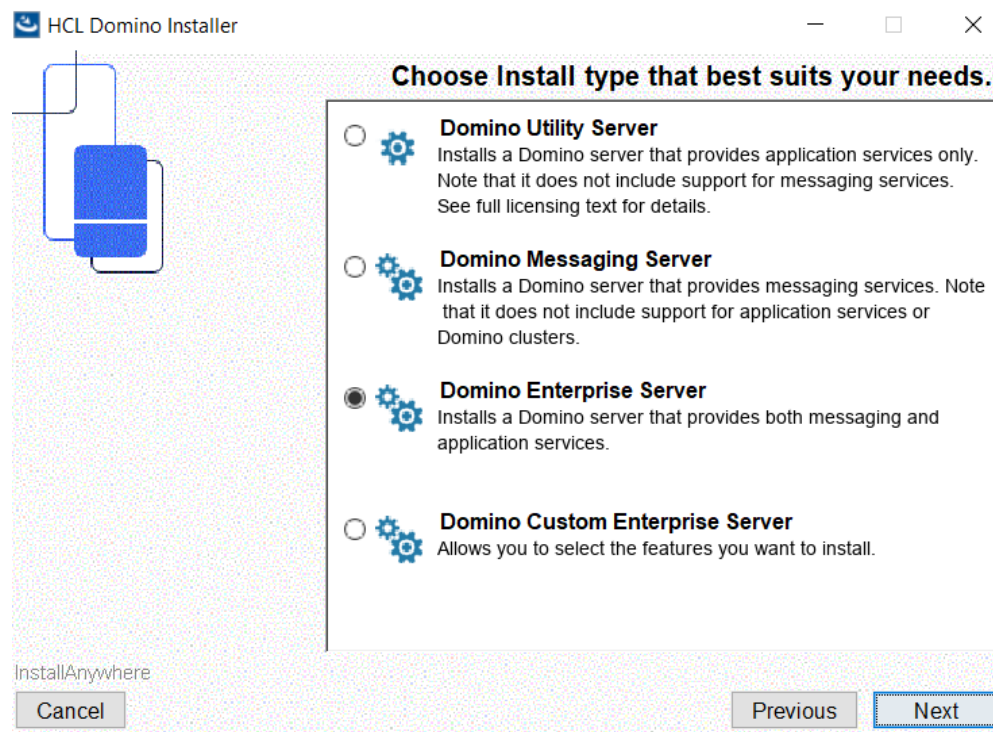
D. Make sure to place the path of your program directory on your desired drive space.



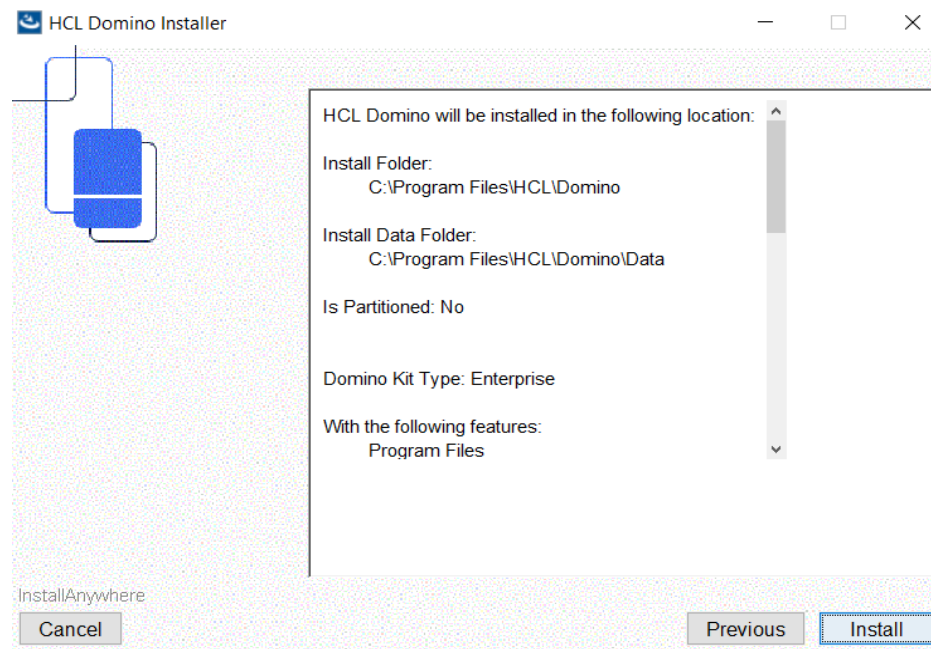
E. As well as your data directory (paths can be the same or different).



F.

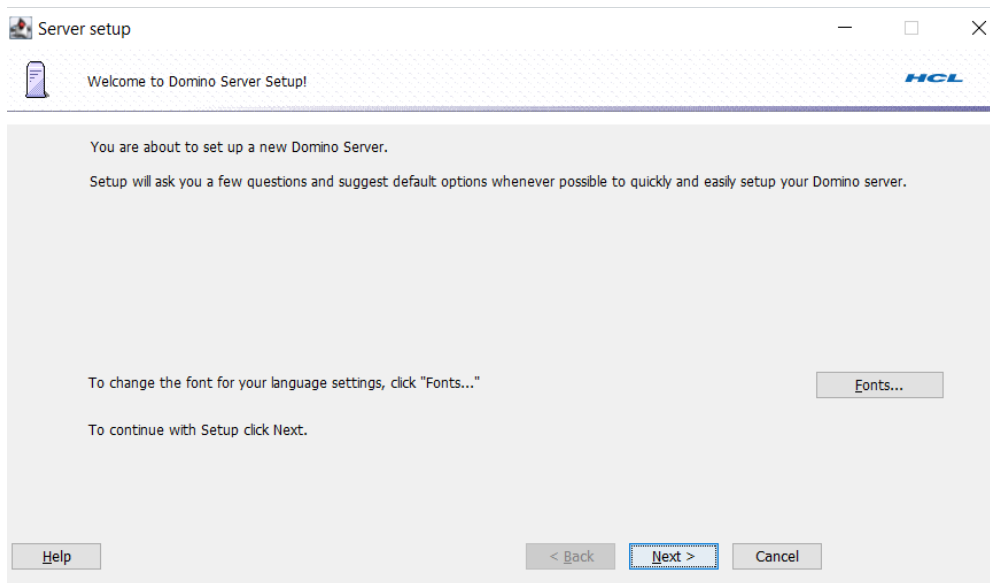


G.

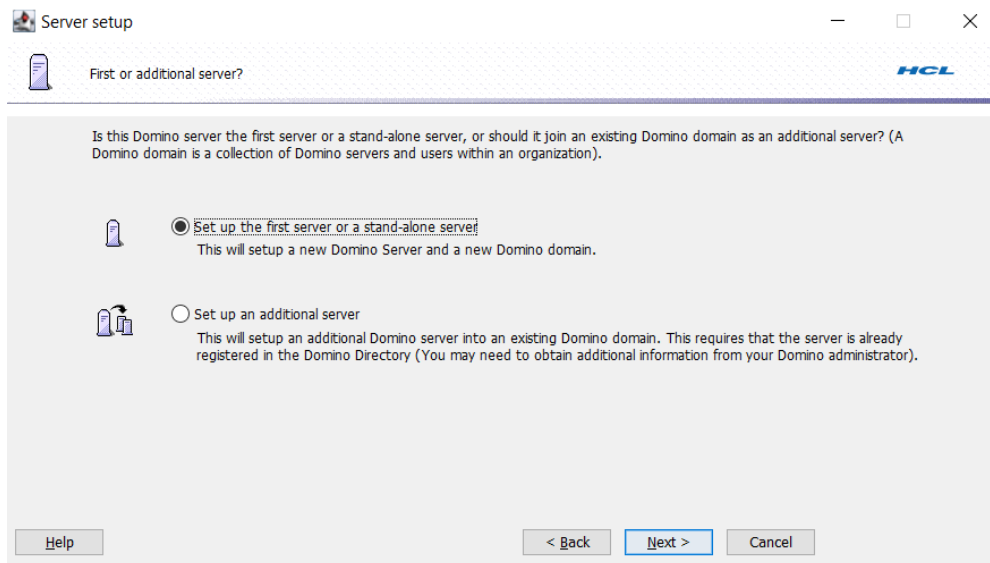


Step 3: Doing Server Setup

A. Select desired font and click Next.



B. Use the first option if setting up new server or stand-alone using same certifier to other server. You can do additional server once you want to register new server as secondary server.



C. Put the desired name of the server and the title of it to display its purpose.

Click the check box, if you want to use the registered server as secondary server under same domain

The screenshot shows the 'Server setup' window with the title bar 'Server setup' and the HCL logo. The subtitle is 'Provide a server name and title'. The main text reads: 'You must provide a unique name for your new Domino server. Carefully choose the server name; you cannot easily change it later. By default, Setup recommends that you use the computer's host name as the server name.' There are two input fields: 'Server name:' with the value 'External' and a hint 'For example: Sales1'; and 'Server title:' with the value 'Mail Server' and a hint 'For example: Corporate Sales Server 1'. Below these is a checkbox 'I want to use an existing server ID file:' which is unchecked, with a file path 'C:\Program Files\HCL\Domino\Data\server.id' and a 'Browse...' button. At the bottom are 'Help', '< Back', 'Next >', and 'Cancel' buttons.

D. Put the desired organization name with password.

-Click the checkbox if you want to put the same certifier from your previous server.

-You can customize the setting of your organization.

The screenshot shows the 'Server setup' window with the title bar 'Server setup' and the HCL logo. The subtitle is 'Choose your organization name'. The main text reads: 'The organization name is usually your company name. It becomes part of each server and user name. Do not choose a long organization name. For example, instead of Acme Corporation, use Acme.' There are two input fields: 'Organization name' with the value 'HCL' and a hint 'Minimum of 3 characters'; and 'Organization Certifier password:' with a masked password '.....' and a hint 'Minimum of 5 characters'. Below these is a checkbox 'I want to use an existing certifier ID file:' which is unchecked, with a file path 'C:\Program Files\HCL\Domino\Data\cert.id' and a 'Browse...' button. At the bottom are 'Help', '< Back', 'Next >', and 'Cancel' buttons.

E. Put the desired domain name (usually it is the same as your organization name if you are planning to start a new server)..

Server setup

Choose the Domino domain name

As part of setting up the first Domino server, Setup creates a new Domino domain, which is a collection of Domino servers and users that share the same Domino Directory.

The Domino domain name can be the same as the organization name. Choose a short domain name.

Domino domain name
For example: Acme

Help < Back Next > Cancel

F. Enter the desired administrator name and its password.

-You can save a local copy of the ID and you can use existing Admin ID as your administrator to your new server.

Server setup

Specify an Administrator name and password

To create the Administrator's ID, you must provide the administrator's name and password. You can use the name of a specific person, or a last name only to create a generic Administrator ID that can be used by several people.

First name: Middle: Last name (or generic account name):

Administrator password: Confirm password:
Minimum of 5 characters

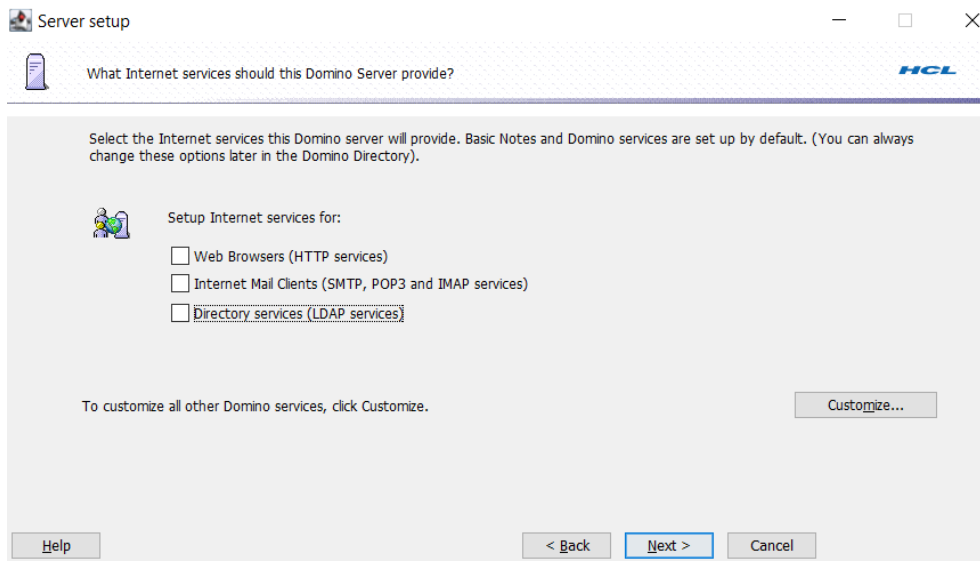
The Administrator ID file will be stored inside the server's Domino Directory.

☐ Also save a local copy of the ID file:
C:\Program Files\HCL\Domino\Data\admin.id

☐ I want to use an existing Administrator ID file:
C:\Program Files\HCL\Domino\Data\admin.id

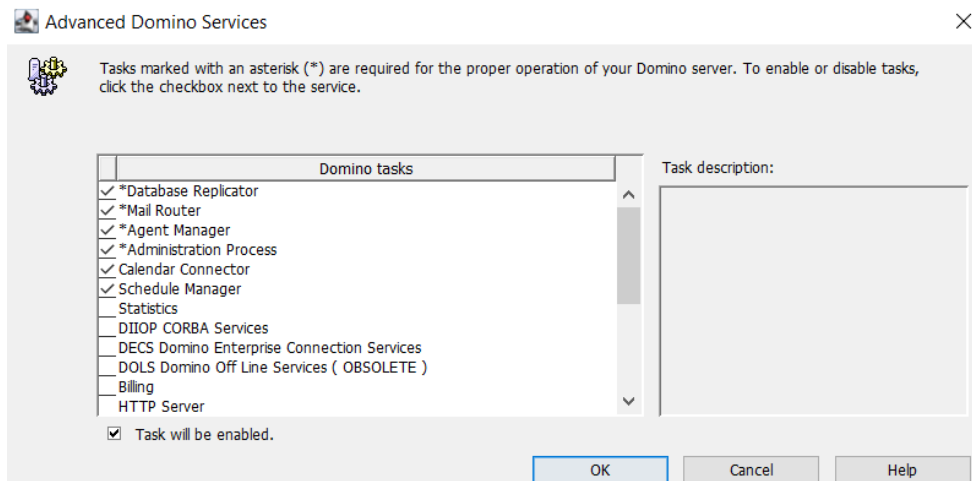
Help < Back Next > Cancel

G. Selecting Domino server services mainly internet services

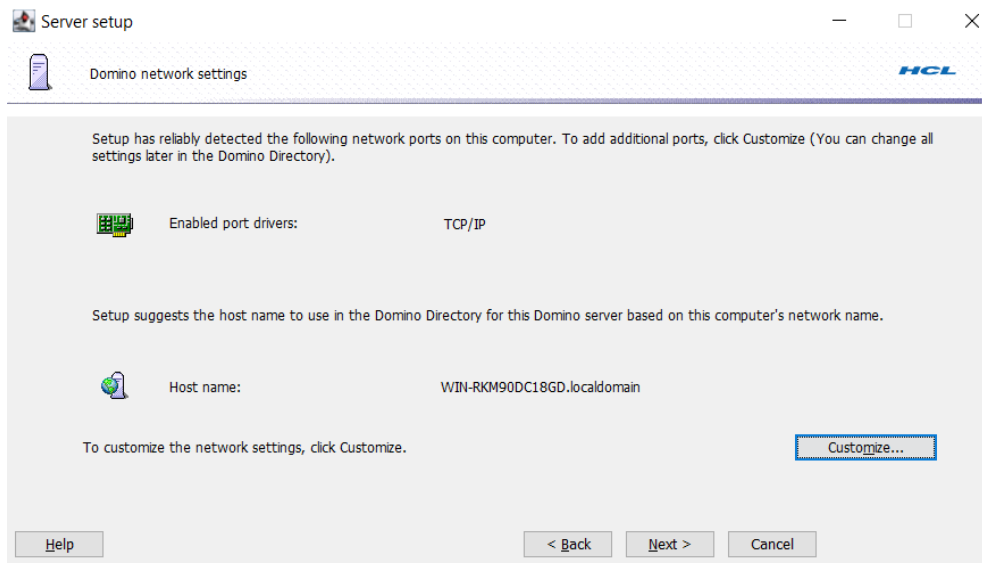


-You can choose the services you want to enable when starting the server.

-It will be added to the notes.ini of your server



H. This is the portion for Domino network. Click Next if no specification is needed.



Server setup

Domino network settings

Setup has reliably detected the following network ports on this computer. To add additional ports, click Customize (You can change all settings later in the Domino Directory).

Enabled port drivers: TCP/IP

Setup suggests the host name to use in the Domino Directory for this Domino server based on this computer's network name.

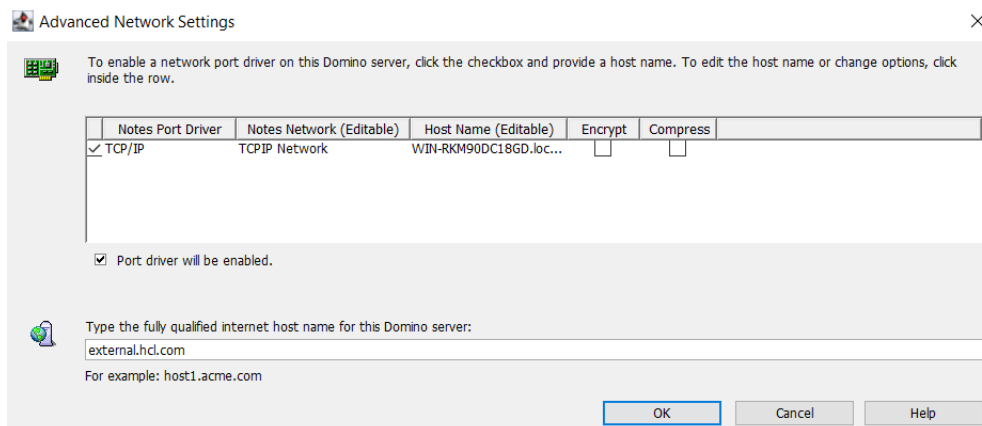
Host name: WIN-RKM90DC18GD.localdomain

To customize the network settings, click Customize.

Customize...

Help < Back Next > Cancel

-You can put your desired FQDN/hostname of the server



Advanced Network Settings

To enable a network port driver on this Domino server, click the checkbox and provide a host name. To edit the host name or change options, click inside the row.

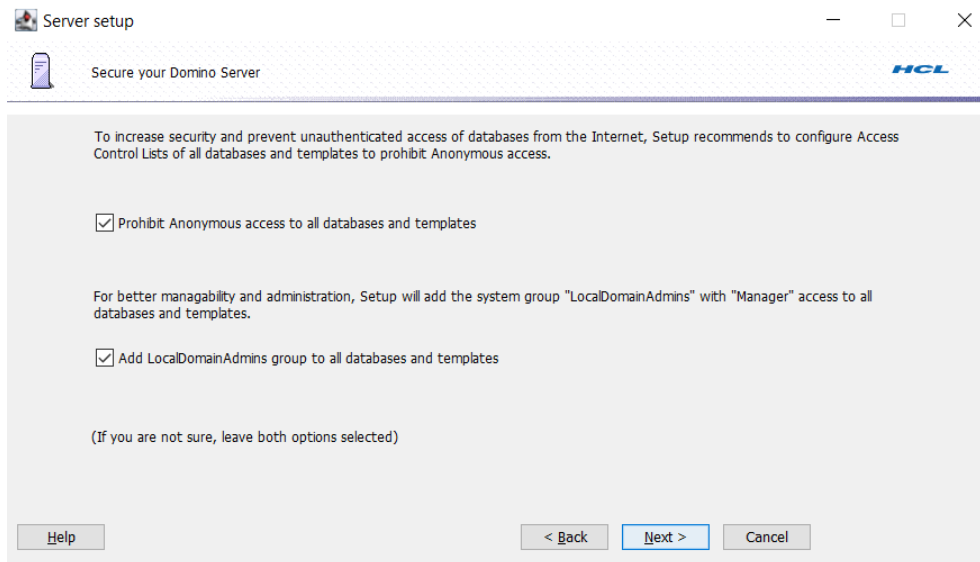
Notes Port Driver	Notes Network (Editable)	Host Name (Editable)	Encrypt	Compress
<input checked="" type="checkbox"/> TCP/IP	TCP/IP Network	WIN-RKM90DC18GD.loc...	<input type="checkbox"/>	<input type="checkbox"/>

☒ Port driver will be enabled.

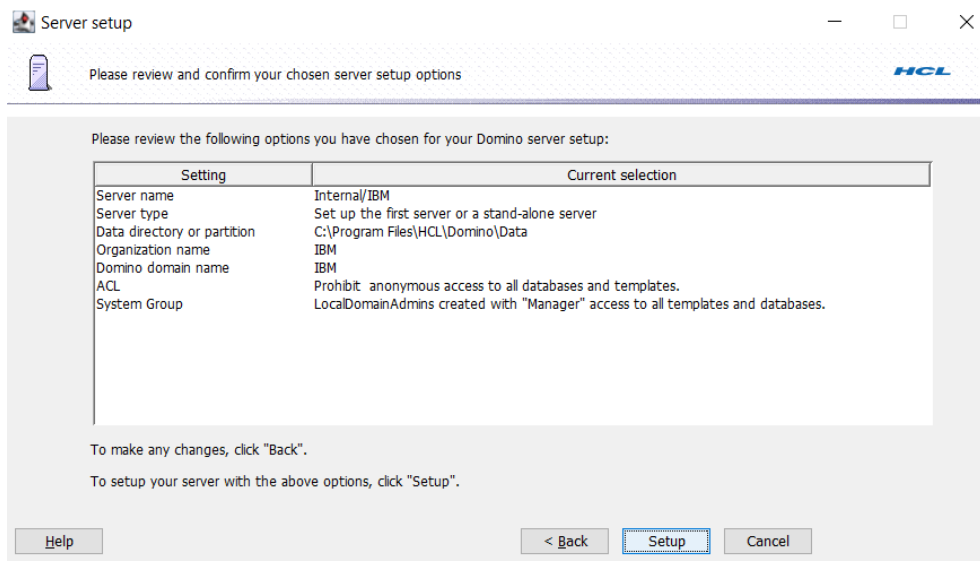
Type the fully qualified internet host name for this Domino server:
external.hcl.com
For example: host1.acme.com

OK Cancel Help

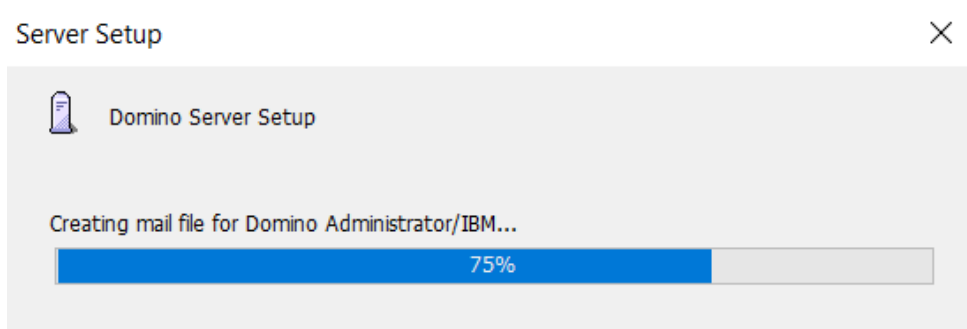
I. Secure your Domino server. You can uncheck the default settings but recommended to check those settings. Hit Next.



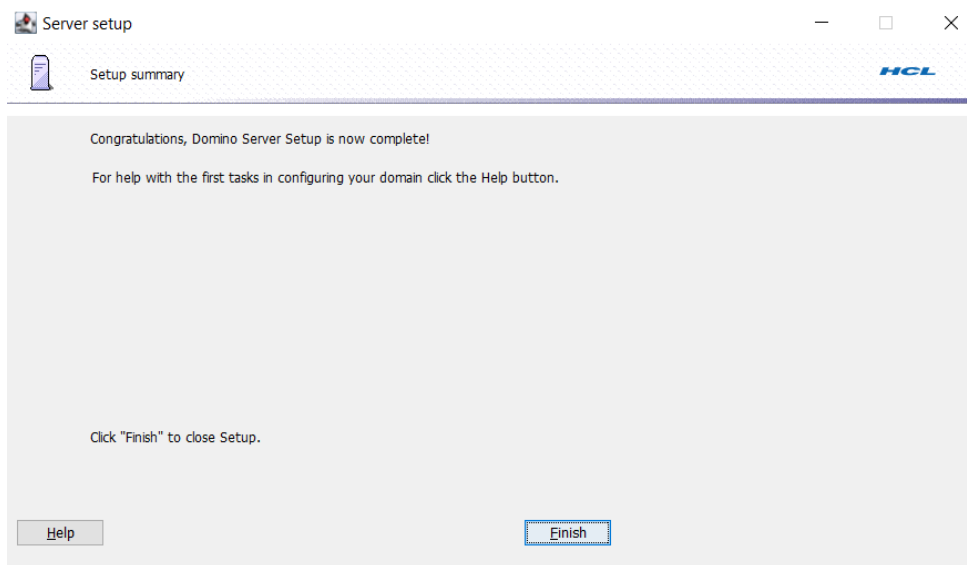
J. Here's the summary of the setup before you execute and 'SETUP' the server



-Wait for loading to finish, observe if error may pop-up



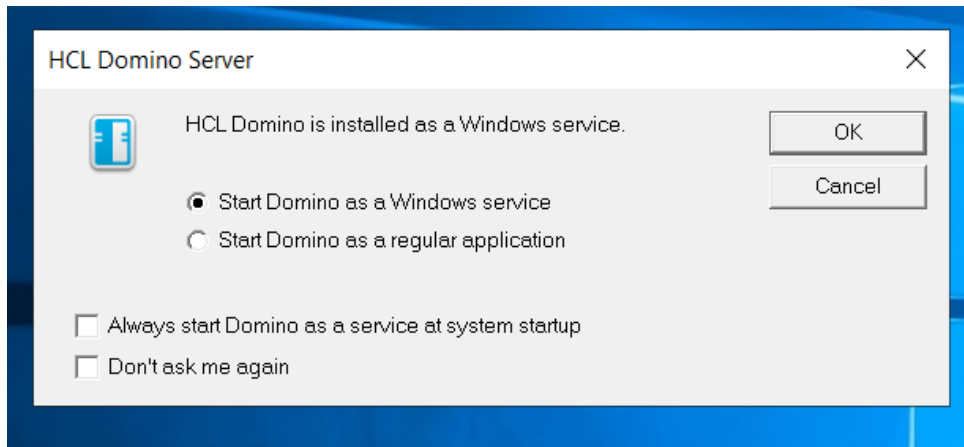
K. You successfully setup the Domino server



Step 4: Boot up the Domino server

-There are two options for your to boot up the server

1. Start as a service (running the domino server at the background)
2. Start as an application (hit the Domino GUI to run the app)

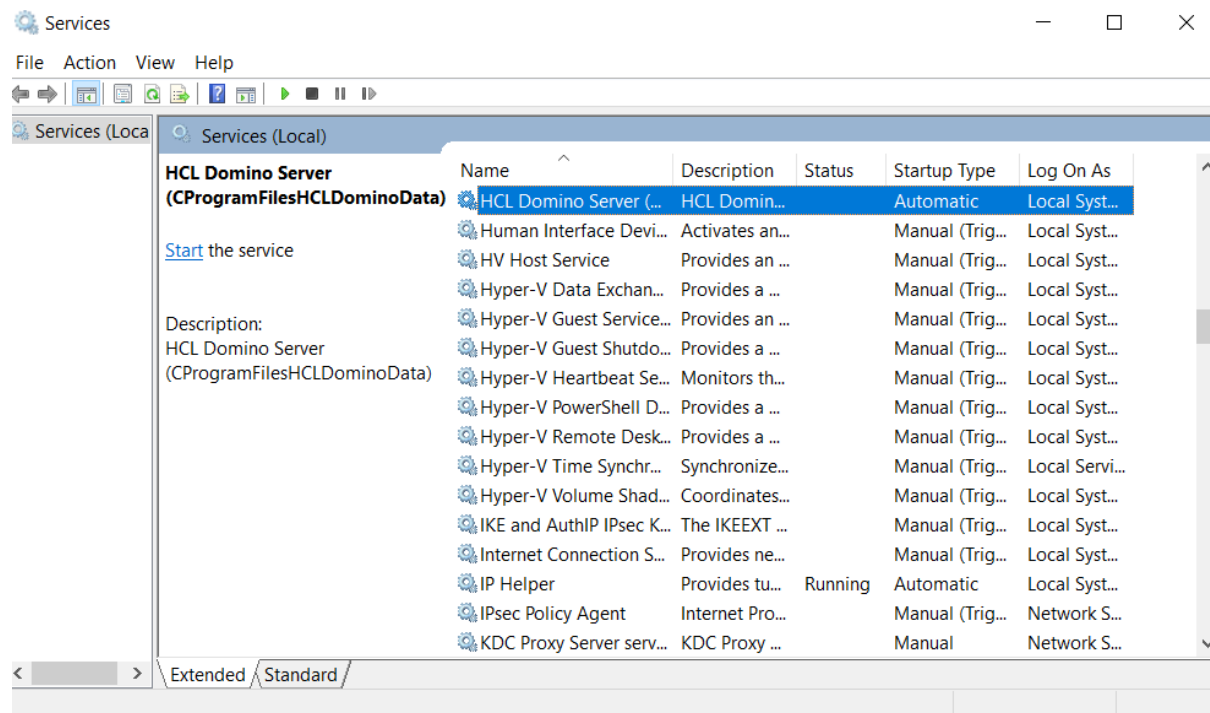


A. See that the server runs as an application, which would indicate a successful install.

```
Internal/IBM: HCL Domino Server (64 Bit)
[11F4:0025-1370] 06/28/2020 12:26:43 PM Informational, rebuilding view - no container or index (reading C:\Program File
s\HCL\Domino\Data\names.nsf view note Title:'($Programs)')
[08F0:0004-0B9C] 06/28/2020 12:26:43 PM Informational, rebuilding view - no container or index (reading C:\Program File
s\HCL\Domino\Data\names.nsf view note Title:'($Adminp)')
[0724:0002-0E88] 06/28/2020 12:26:44 PM SchedMgr: Informational: Schedule Manager is responsible for the busytime datab
ase on this server.
[10C0:0002-04A8] 06/28/2020 12:26:44 PM RnRMgr: Informational: Schedule Manager is responsible for the busytime databas
e on this server.
[08F0:0002-0B9C] 06/28/2020 12:26:44 PM Administration Process started
[0724:0002-0E88] 06/28/2020 12:26:44 PM Removing the version 0 free time data. Recreating it as version 4.
[11F4:0006-1370] 06/28/2020 12:26:44 PM Database Server started
[0724:0002-0E88] 06/28/2020 12:26:44 PM On setting preserved for Database Option: LARGE_UNKTABLE for database C:\Progra
m Files\HCL\Domino\Data\busytime.nsf
[0DF4:000D-1168] 06/28/2020 12:26:45 PM Event: Creating the Domino Domain Monitor (11) database.
[0724:0002-0E88] 06/28/2020 12:26:45 PM Schedule Manager: Informational: Detailed schedule information collection is no
t enabled via the domain-wide Server Configuration document.
[0724:0002-0E88] 06/28/2020 12:26:45 PM SchedMgr: Validating schedule database
[0DF4:000D-1168] 06/28/2020 12:26:45 PM Created Domain Monitoring Database from template, verify ACL as changes may hav
e been lost
[0724:0002-0E88] 06/28/2020 12:26:46 PM SchedMgr: Done validating schedule database
[1080:0004-0BB0] 06/28/2020 12:26:48 PM Informational, rebuilding view - no container or index (reading C:\Program File
s\HCL\Domino\Data\names.nsf view note Title:'($Clusters)')
[1080:0002-0BB0] 06/28/2020 12:26:49 PM Router: Mail Router started for domain IBM
[1080:0002-0BB0] 06/28/2020 12:26:49 PM Router: Internet SMTP host internal in domain ibm.com; SMTP display host name i
nternal.ibm.com
[10C0:0002-04A8] 06/28/2020 12:26:59 PM Rooms and Resources Manager: Informational: Detailed schedule information colle
ction is not enabled via the domain-wide Server Configuration document.
[10C0:0002-04A8] 06/28/2020 12:26:59 PM RnRMgr: Validating schedule database
[10C0:0002-04A8] 06/28/2020 12:26:59 PM RnRMgr: Done validating schedule database
```

B. Running the server as services

-Check the Windows Services panel and see if the server startup type configured as automatic



IV. Common Issues

1. Error: Disk issue but the operating system has sufficient disk space> the installer cannot distinguish by the operating system when it is place externally. Need to place the installer inside the environment
2. Unable to start as a service > Check the notes.ini if the server controller is enabled. See the following parameters: ServerController=1, TCPIP_ControllerTcpIpAddress=10.10.10.5:2050
https://support.hcltechsw.com/csm?id=kb_article&sysparm_article=KB0035321
3. Unable to start as a service > Check the dcontroller.ini and find the hostname and the ip address to be match on your server.
4. Missing dll files > need to re-install the server
5. Server setup failed > Server error: the signature on the certificate was found to be invalid. Check the log file for details.

Server error: the subject's public key found in the certificate is not the one stored in the server's ID file for that entity. Check the server's log file for details.

Need to use valid administration ID under the said domain of the certificate.

How to upgrade HCL Domino v901 to HCL Domino v1101 to Windows Server Environment

I. Introduction:

Windows Server is one of the pioneer operating system environment for installation of Domino server and the said module will show how to upgrade v901 to v1101.

II. Download Information

Download the file from flexnet.

<https://hclsoftware.flexnetoperations.com/flexnet/operationsportal/logon.do>

II. System Requirements:

https://support.hcltechsw.com/csm?id=kb_article&sysparm_article=KB0077033

OS	Hardware	Bitness
Windows Server 2019 Standard Edition	x86-64	64-exploit
Windows Server 2019 Datacenter Edition	x86-64	64-exploit
Windows Server 2016 Standard Edition	x86-64	64-exploit
Windows Server 2016 Datacenter Edition	x86-64	64-exploit
Windows Server 2012 R2 Standard Edition	x86-64	64-exploit
Windows Server 2012 R2 Datacenter Edition	x86-64	64-exploit

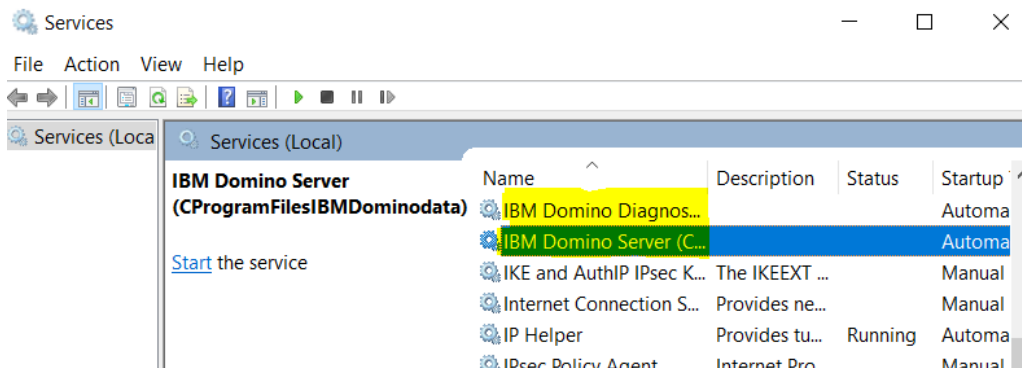
III. Procedure to upgrade

Step 1: Shutdown the working Domino Server v901 (or any FP applied) on your environment.

Make sure all the services related to Domino are stopped.

External/IBM: IBM Domino Server (64 Bit)

```
on this server.
03CC:0002-1038] 06/15/2020 01:39:55 PM Administration Process started
114C:0002-0F40] 06/15/2020 01:39:55 PM Removing the version 0 free time data. Recreating it as ve
0C3C:0002-0D40] 06/15/2020 01:39:55 PM Router: Internet SMTP host test in domain ibm.com
114C:0002-0F40] 06/15/2020 01:39:56 PM Schedule Manager: Informational: Detailed schedule informat
enabled via the domain-wide Server Configuration document.
114C:0002-0F40] 06/15/2020 01:39:56 PM SchedMgr: Validating schedule database
03EC:000D-12EC] 06/15/2020 01:39:56 PM Event: Creating the Domino Domain Monitor (9) database.
114C:0002-0F40] 06/15/2020 01:39:57 PM SchedMgr: Done validating schedule database
03EC:000D-12EC] 06/15/2020 01:39:57 PM Created Domain Monitoring Database from template, verify AC
been lost
0CFC:0002-06B4] 06/15/2020 01:40:10 PM Rooms and Resources Manager: Informational: Detailed schedu
tion is not enabled via the domain-wide Server Configuration document.
0CFC:0002-06B4] 06/15/2020 01:40:10 PM RnRMgr: Validating schedule database
0CFC:0002-06B4] 06/15/2020 01:40:11 PM RnRMgr: Done validating schedule database
shutdown
0570:0006-12CC] Command or option is not recognized
quit
0D2C:0002-11D4] 06/15/2020 01:40:51 PM Calendar Connector shutdown
0C3C:0002-0D40] 06/15/2020 01:40:51 PM Router: Shutdown is in progress
0CFC:0002-06B4] 06/15/2020 01:40:51 PM Rooms and Resources Manager shutdown complete
114C:0002-0F40] 06/15/2020 01:40:51 PM Schedule Manager shutdown complete
1268:0002-0638] 06/15/2020 01:40:52 PM AMgr: Executive '1' shutting down. Process id '4712'
03CC:0002-1038] 06/15/2020 01:40:52 PM Administration Process shutdown
0964:0002-08B8] 06/15/2020 01:40:53 PM Agent Manager shutdown complete
0C3C:0002-0D40] 06/15/2020 01:40:53 PM Router: Mail Router shutdown
03EC:0002-0B0C] 06/15/2020 01:40:55 PM Event Monitor shutdown
0394:0002-1120] 06/15/2020 01:40:56 PM Database Replicator shutdown
1068:0002-0580] 06/15/2020 01:40:56 PM Index update process shutdown
```



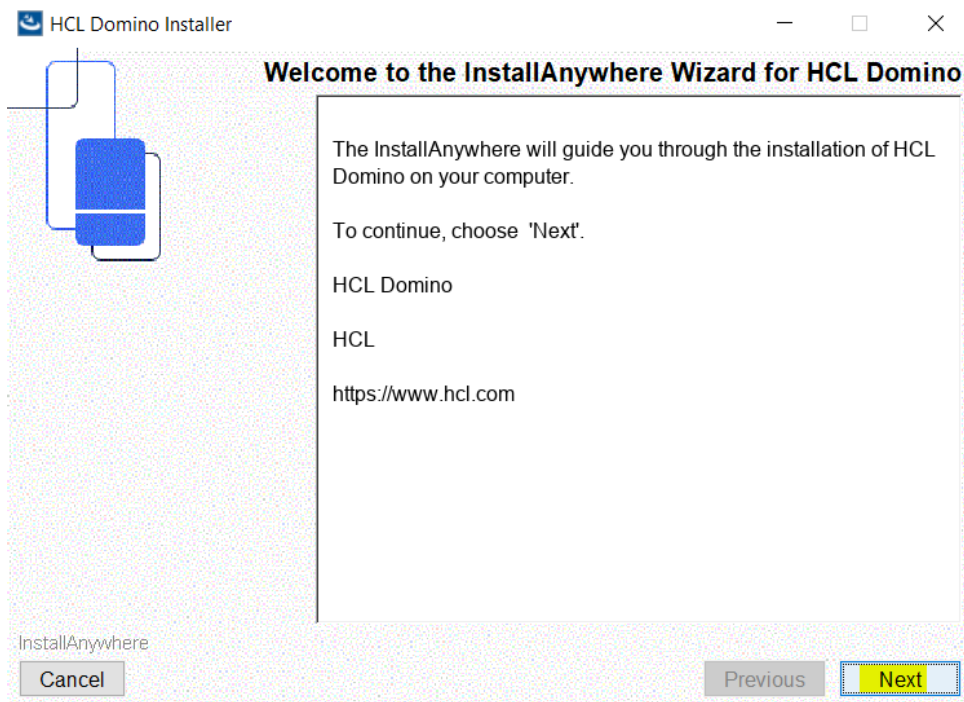
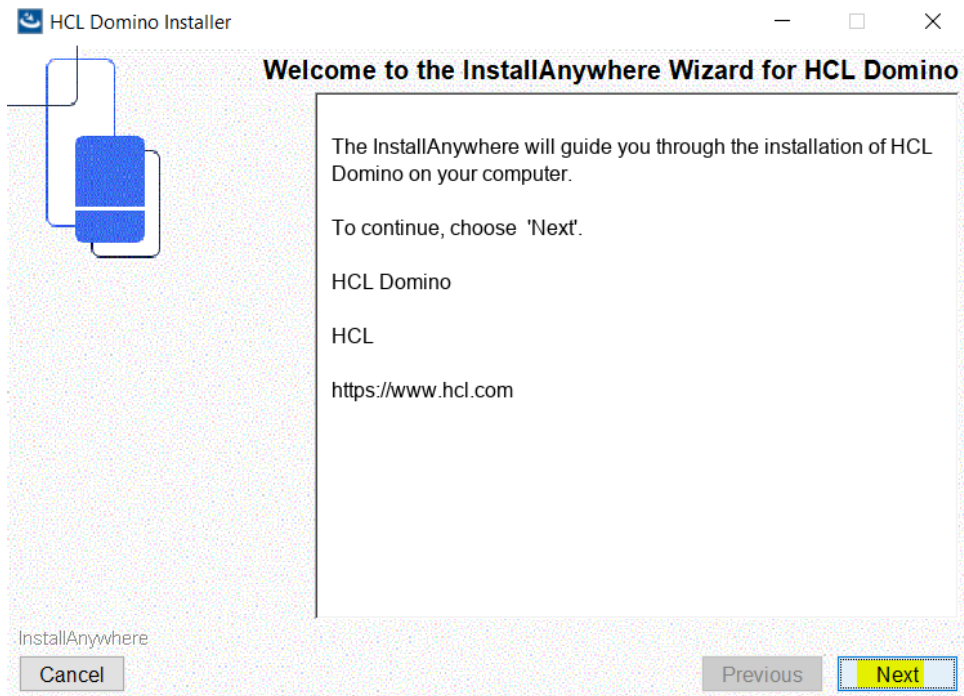
Step 2: Install the Domino Server v1101 on top of the existing Domino server. They differ in folders. Domino Server v901 (IBM) and v1101 (HCL). No issue on in-place upgrade, just override the existing server.

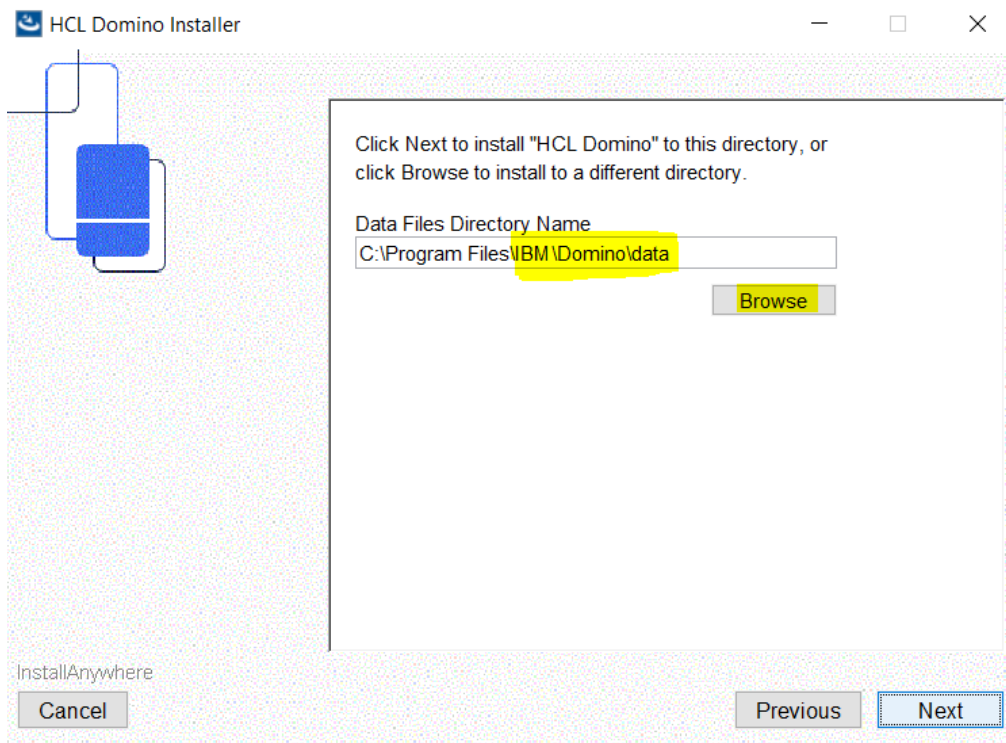
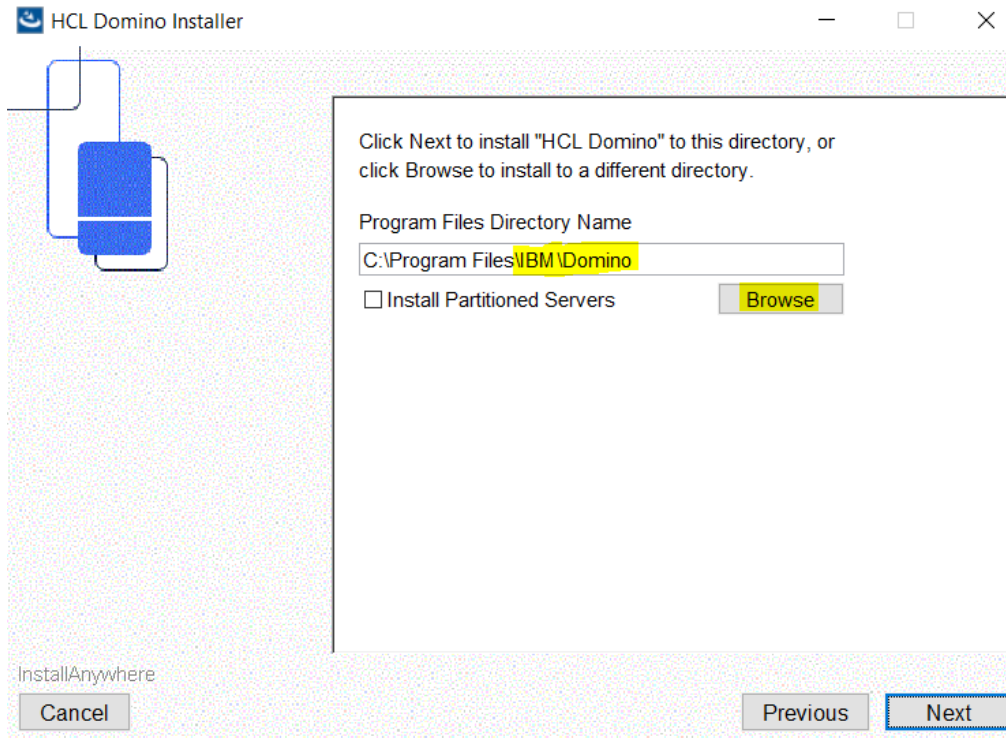
> This PC > Local Disk (C:) > Program Files > IBM > Domino >					
	Name	Date modified	Type	Size	
	_uninst	6/15/2020 1:32 PM	File folder		
	C	6/15/2020 1:28 PM	File folder		
	data	6/15/2020 1:41 PM	File folder		
	jvm	6/15/2020 1:24 PM	File folder		

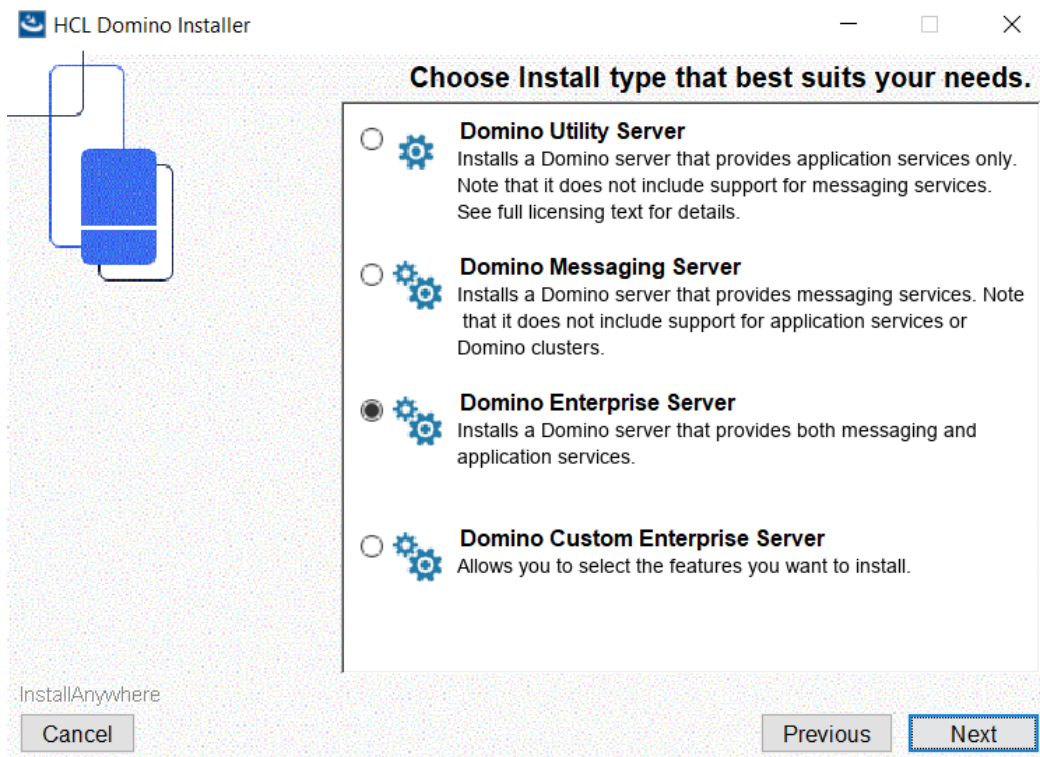
Step 3: Installation proper

Hit 'ok' on the installer

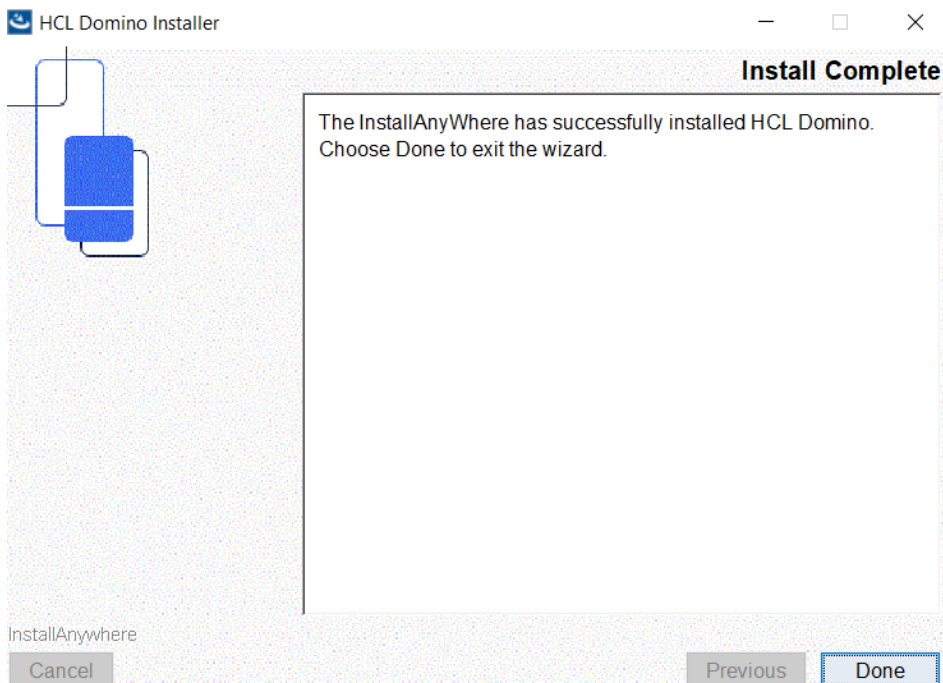








And hit 'Install'



Step 4: Boot up the server

Checking the Release to the server

External/IBM: HCL Domino Server (64 Bit)

```
[115C:0002-13FC] HCL Domino (r) Server (64 Bit), Release 11.0.1, March 21, 2020
[115C:0002-13FC] (C) Copyright HCL Technologies. 1987, 2020

[115C:0005-13FC] 06/15/2020 02:15:07 PM Informational, rebuild view needed - invalid collection header (reading C:\Program Files\IBM\Domino\data\names.nsf view note Title:'($Users)')
[115C:0005-13FC] 06/15/2020 02:15:07 PM Informational, rebuild view needed - invalid collection header (reading C:\Program Files\IBM\Domino\data\names.nsf view note Title:'($Users)')
[115C:0005-13FC] 06/15/2020 02:15:07 PM Invalid collection data was detected.
[115C:0005-13FC] 06/15/2020 02:15:07 PM Informational, rebuild view needed - invalid collection header (reading C:\Program Files\IBM\Domino\data\names.nsf view note Title:'($ServerAccess)')
[115C:0005-13FC] 06/15/2020 02:15:07 PM Informational, rebuild view needed - invalid collection header (reading C:\Program Files\IBM\Domino\data\names.nsf view note Title:'($ServerAccess)')
[115C:0005-13FC] 06/15/2020 02:15:07 PM Invalid collection data was detected.
[115C:0002-13FC] 06/15/2020 02:15:07 PM Setting default information in preferences file...
[115C:0002-13FC] 06/15/2020 02:15:08 PM Upgrading the design of your databases
[115C:0002-13FC] 06/15/2020 02:15:09 PM Informational, rebuilding view - no container or index (reading C:\Program Files\IBM\Domino\data\pubnames.ntf view note Title:'($Certifiers)')
[115C:0002-13FC] 06/15/2020 02:15:09 PM Informational, rebuilding view - no container or index (reading C:\Program Files\IBM\Domino\data\pubnames.ntf view note Title:'($FileIdentifications)')
[115C:0002-13FC] 06/15/2020 02:15:09 PM Informational, rebuilding view - no container or index (reading C:\Program Files\IBM\Domino\data\pubnames.ntf view note Title:'($Holidays)')
[115C:0002-13FC] 06/15/2020 02:15:09 PM Informational, rebuilding view - no container or index (reading C:\Program Files\IBM\Domino\data\pubnames.ntf view note Title:'($ServerParameters)')
[115C:0002-13FC] 06/15/2020 02:15:09 PM Informational, rebuilding view - no container or index (reading C:\Program Files\IBM\Domino\data\pubnames.ntf view note Title:'($PoliciesExt)')
```

Step 5: Upgrade the templates

External/IBM: HCL Domino Server (64 Bit)

```
[115C:0005-13FC] 06/15/2020 02:15:07 PM Informational, rebuild view needed - invalid collection header (reading C:\Program Files\IBM\Domino\data\names.nsf view note Title:'($Users)')
[115C:0005-13FC] 06/15/2020 02:15:07 PM Informational, rebuild view needed - invalid collection header (reading C:\Program Files\IBM\Domino\data\names.nsf view note Title:'($Users)')
[115C:0005-13FC] 06/15/2020 02:15:07 PM Invalid collection data was detected.
[115C:0005-13FC] 06/15/2020 02:15:07 PM Informational, rebuild view needed - invalid collection header (reading C:\Program Files\IBM\Domino\data\names.nsf view note Title:'($ServerAccess)')
[115C:0005-13FC] 06/15/2020 02:15:07 PM Informational, rebuild view needed - invalid collection header (reading C:\Program Files\IBM\Domino\data\names.nsf view note Title:'($ServerAccess)')
[115C:0005-13FC] 06/15/2020 02:15:07 PM Invalid collection data was detected.
[115C:0002-13FC] 06/15/2020 02:15:07 PM Setting default information in preferences file...
[115C:0002-13FC] 06/15/2020 02:15:08 PM Upgrading the design of your databases
[115C:0002-13FC] 06/15/2020 02:15:09 PM Informational, rebuilding view - no container or index (reading C:\Program Files\IBM\Domino\data\pubnames.ntf view note Title:'($Certifiers)')
[115C:0002-13FC] 06/15/2020 02:15:09 PM Informational, rebuilding view - no container or index (reading C:\Program Files\IBM\Domino\data\pubnames.ntf view note Title:'($FileIdentifications)')
[115C:0002-13FC] 06/15/2020 02:15:09 PM Informational, rebuilding view - no container or index (reading C:\Program Files\IBM\Domino\data\pubnames.ntf view note Title:'($Holidays)')
[115C:0002-13FC] 06/15/2020 02:15:09 PM Informational, rebuilding view - no container or index (reading C:\Program Files\IBM\Domino\data\pubnames.ntf view note Title:'($ServerParameters)')
[115C:0002-13FC] 06/15/2020 02:15:09 PM Informational, rebuilding view - no container or index (reading C:\Program Files\IBM\Domino\data\pubnames.ntf view note Title:'($PoliciesExt)')

[115C:0002-13FC] *****
[115C:0002-13FC] Do you want to upgrade the design of the Domino Directory? This replaces the standard forms and views with ones from the template.
[115C:0002-13FC] (Yes/No)
```

IV. Common Issues

1. Error: Disk issue but the operating system has sufficient disk space

Solution:

the installer cannot distinguish by the operating system when it is place externally. Need to place the installer inside the environment

2. Unable to start as a service

Solution:

Check the notes.ini if the server controller is enabled. See the following parameters:

ServerController=1, TCPIP_ControllerTcpIpAddress=10.10.10.5:2050

https://support.hcltechsw.com/csm?id=kb_article&sysparm_article=KB0035321

3. Unable to start as a service

Solution:

Check the dcontroller.ini and find the hostname and the ip address to be match on your server.

4. Missing dll files

Solution:

Need to re-install the server

How to un-install HCL Domino v1101 to Windows Server Environment

I. Introduction:

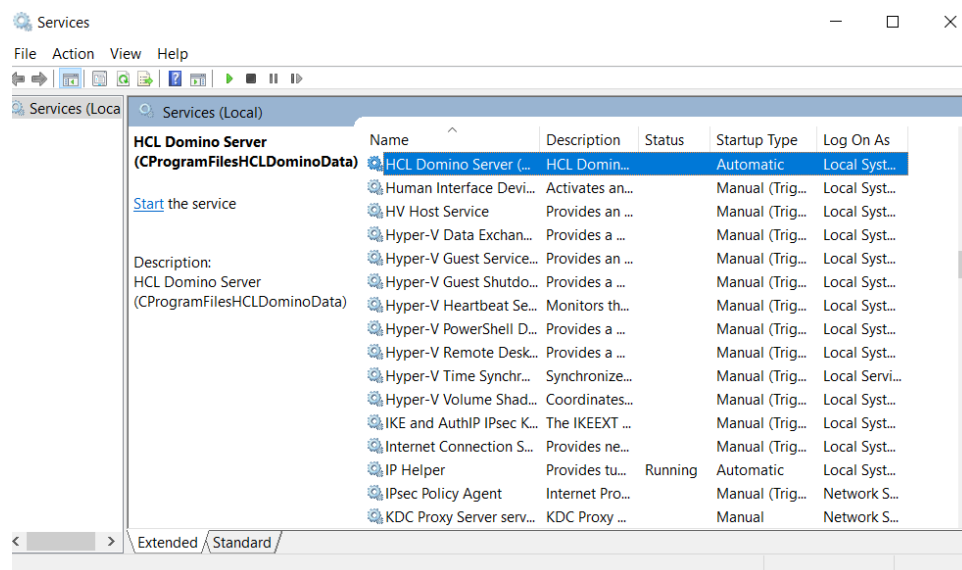
If there is installation of Domino Server on Windows, then there is also un-installation. Every direct to the point procedure wherein the goal of this cookbook is to show how the Domino v1101 un-install on Windows Server Environment.

II. How to Uninstall

THERE ARE COUPLE OF OPTIONS YOU CAN DO FOR UNINSTALLING DOMINO V11.0.1

STEP 1: CHECK IF THE SERVER IS RUNNING

A, VIA WINDOWS SERVICES

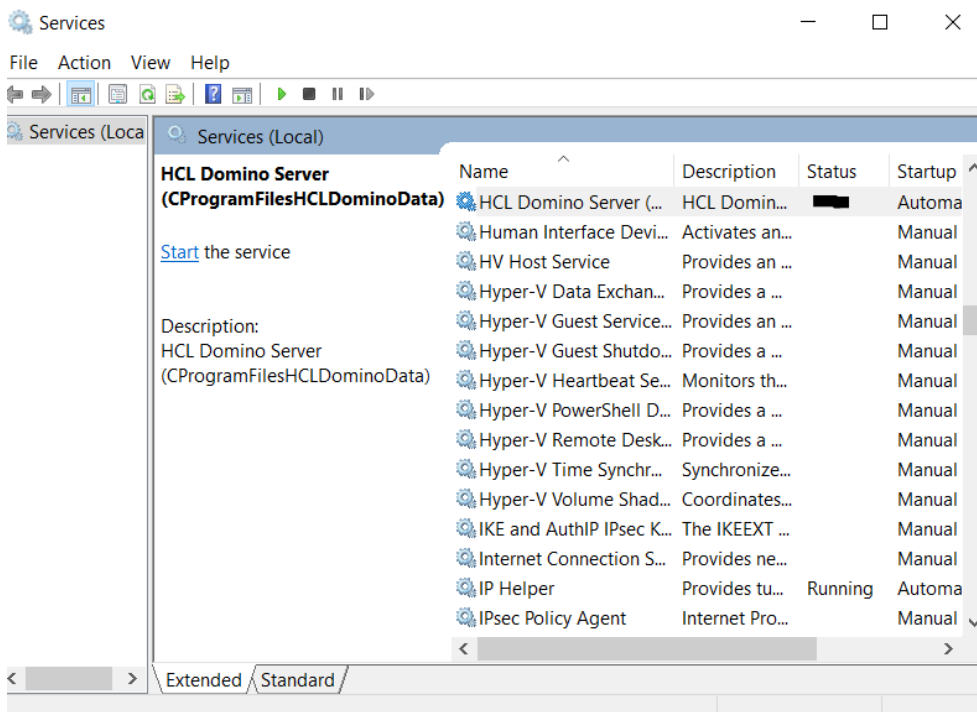


B. VIA DOMINO SERVER CONSOLE

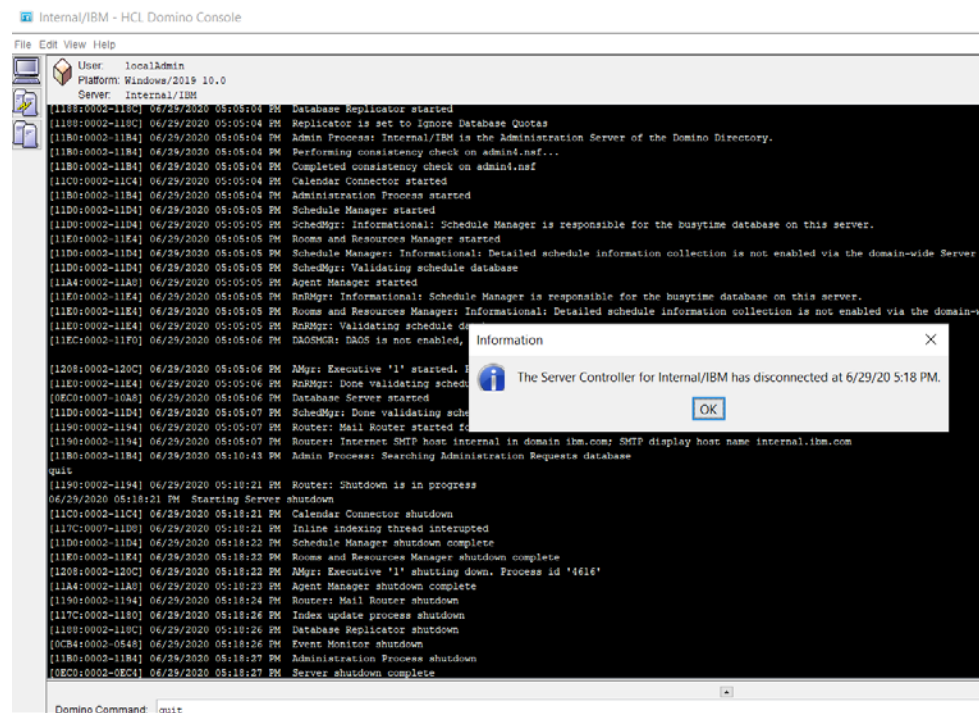
```
User: localAdmin
Platform: Windows/2019 10.0
Server: Internal/IBM,Release 11.0.1
[06/29/2020 05:04:58 PM] Event Monitor started
[06/29/2020 05:04:58 PM] Warning: All Domino Domain Monitoring probes are disabled resulting in the loss of valuable diagnostic information. Please contact your support vendor.
[06/29/2020 05:05:02 PM] Server started on physical node WIN-RM56DCL0GD
[06/29/2020 05:05:03 PM] NOTES.INI contains the following 'DEBUG' parameters:
[06/29/2020 05:05:03 PM]   DEBUG_USE_KEYVIEW=0
[06/29/2020 05:05:03 PM] Warning: Debug parameters could impact operation or performance.
[06/29/2020 05:05:03 PM] Contact your appropriate support vendor.
[06/29/2020 05:05:03 PM] The Console file is C:\Program Files\HCL\Domino\Data\IBM_TECHNICAL_SUPPORT\console.log
[06/29/2020 05:05:03 PM] Console Logging is ENABLED
[06/29/2020 05:05:03.11 PM] Licensing> Invalid length for configuration item 'LicensingServerURL': '0'
[06/29/2020 05:05:03.11 PM] Licensing> Failed to get configuration item 'LicensingServerURL'; Invalid arguments
[06/29/2020 05:05:03 PM] Licensing error: Domino license configuration is not available.
[06/29/2020 05:05:03 PM] An error occurred when initializing the repair engine... repair services will be unavailable No cluster mates found
[11/7/0002-1180] 06/29/2020 05:05:04 PM Index update process started:
[11/8/0002-1180] 06/29/2020 05:05:04 PM Database Replicator started
[11/8/0002-1180] 06/29/2020 05:05:04 PM Replicator is set to Ignore Database Quotas
[11/8/0002-1184] 06/29/2020 05:05:04 PM Admin Process: Internal/IBM is the Administration Server of the Domino Directory.
[11/8/0002-1184] 06/29/2020 05:05:04 PM Performing consistency check on admin4.nsf...
[11/8/0002-1184] 06/29/2020 05:05:04 PM Completed consistency check on admin4.nsf
[11/0/0002-11C4] 06/29/2020 05:05:04 PM Calendar Connector started
[11/8/0002-11B4] 06/29/2020 05:05:04 PM Administration Process started
[11/0/0002-11D4] 06/29/2020 05:05:05 PM Schedule Manager started
[11/0/0002-11D4] 06/29/2020 05:05:05 PM SchedMgr: Informational: Schedule Manager is responsible for the busytime database on this server.
[11/0/0002-11E4] 06/29/2020 05:05:05 PM Rooms and Resources Manager started
[11/0/0002-11D4] 06/29/2020 05:05:05 PM Schedule Manager: Informational: Detailed schedule information collection is not enabled via the domain-wide Server Configuration
[11/0/0002-11D4] 06/29/2020 05:05:05 PM SchedMgr: Validating schedule database
[11/4/0002-11A8] 06/29/2020 05:05:05 PM Agent Manager started
[11/0/0002-11E4] 06/29/2020 05:05:05 PM RnRMgr: Informational: Schedule Manager is responsible for the busytime database on this server.
[11/0/0002-11E4] 06/29/2020 05:05:05 PM Rooms and Resources Manager: Informational: Detailed schedule information collection is not enabled via the domain-wide Server Configuration
[11/0/0002-11E4] 06/29/2020 05:05:05 PM RnRMgr: Validating schedule database
[11/0/0002-11F0] 06/29/2020 05:05:06 PM DAOSEMR: DAOSEMR is not enabled, nothing to do.
[12/08/0002-120C] 06/29/2020 05:05:06 PM AMgr: Executive 'I' started. Process id '4616'
[11/0/0002-11E4] 06/29/2020 05:05:06 PM RnRMgr: Done validating schedule database
[06/29/2020 05:05:06 PM] Database Server started
[11/0/0002-11D4] 06/29/2020 05:05:07 PM SchedMgr: Done validating schedule database
[11/0/0002-1194] 06/29/2020 05:05:07 PM Router: Mail Router started for domain IBM
[11/0/0002-1194] 06/29/2020 05:05:07 PM Router: Internet SMTP host internal in domain ibm.com; SMTP display host name internal.ibm.com
[11/8/0002-11B4] 06/29/2020 05:10:43 PM Admin Process: Searching Administration Requests database
```

STEP 2: SHUTDOWN THE SERVER

A. VIA WINDOWS SERVICES > STOP DOMINO SERVER

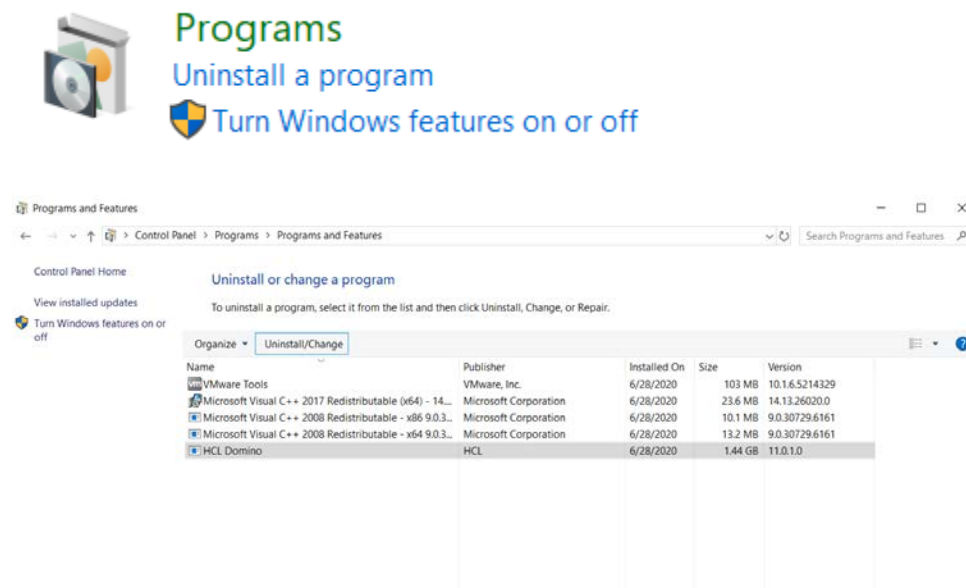


B. VIA DOMINO SERVER CONSOLE: 'QUIT'

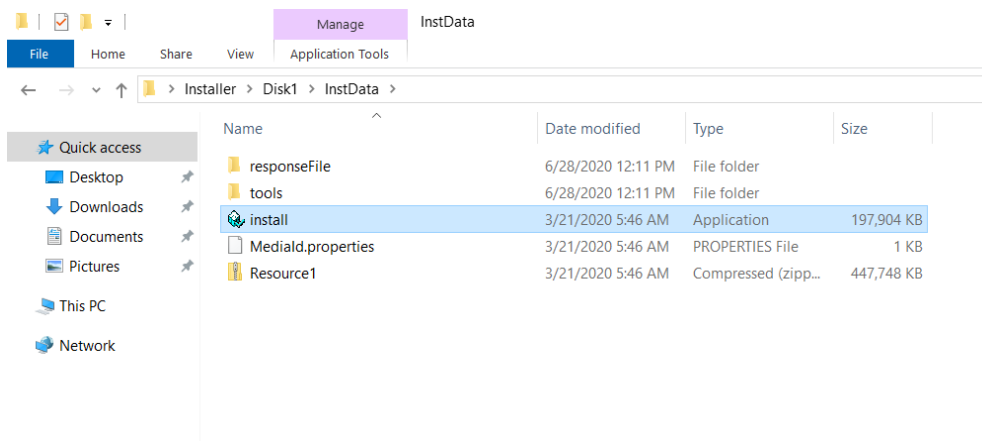


STEP 3: UNINSTALL OPTION ON DOMINO SERVER

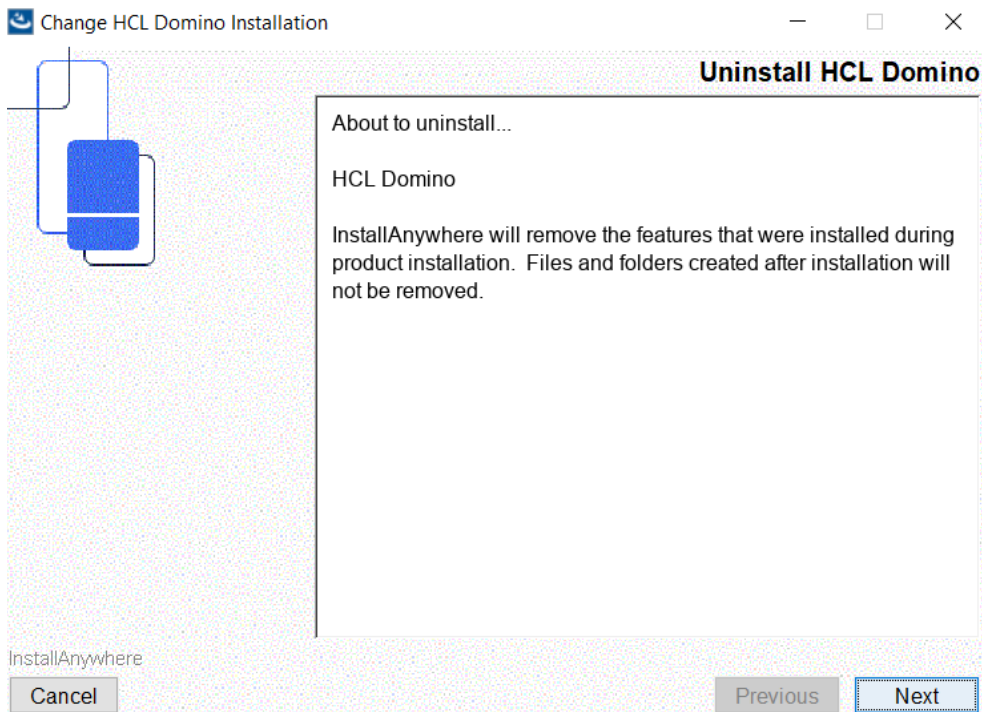
A. VIA CONTROL PANEL

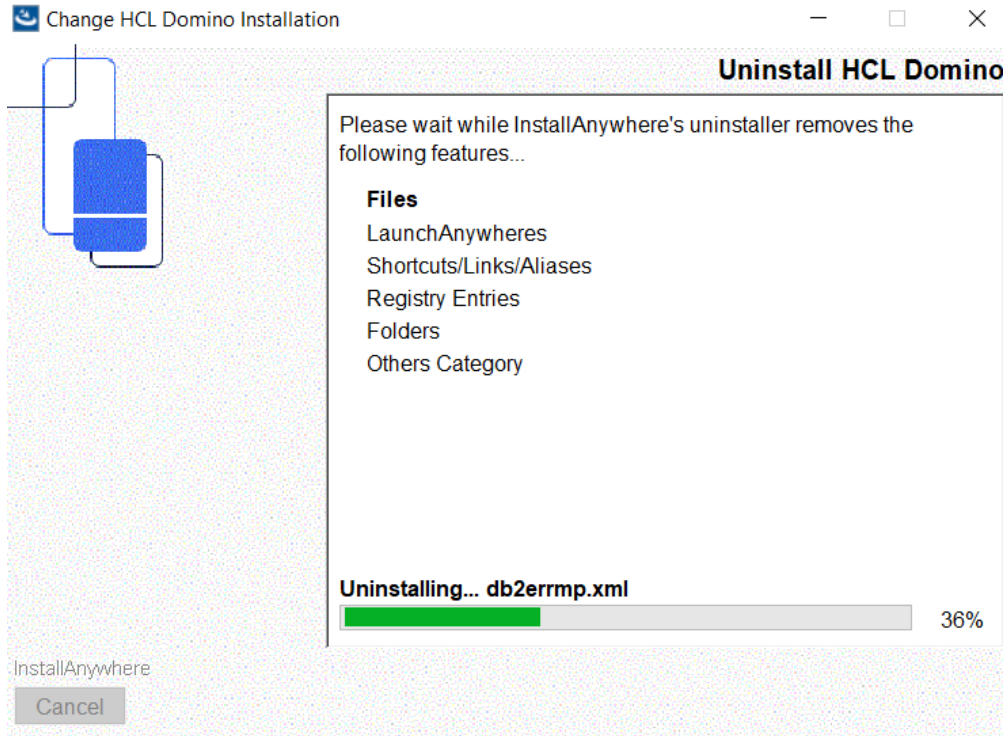


B. VIA INSTALLER

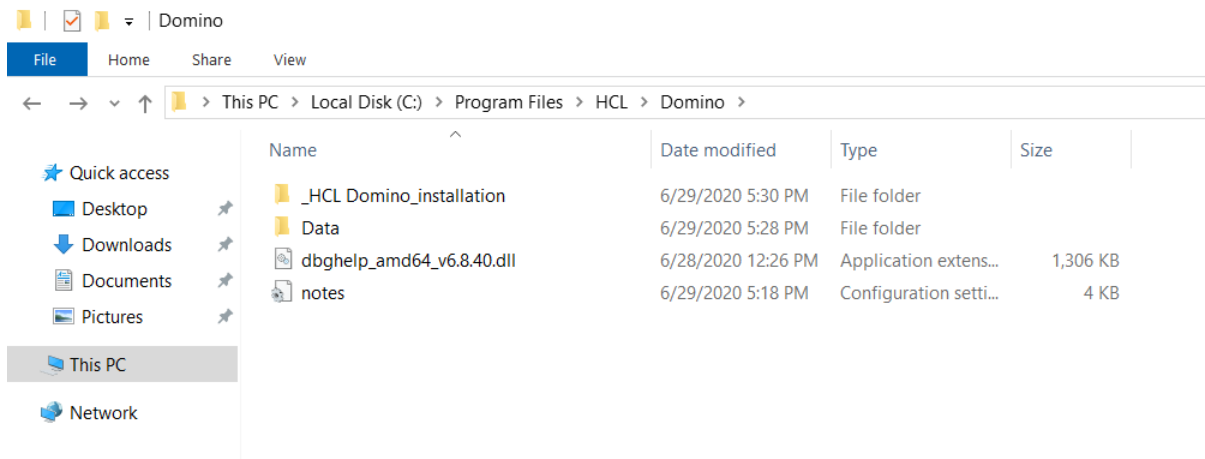


STEP 4. DO THE UNINSTALL > HIT NEXT and wait for the loading to finish then hit DONE





STEP 5. OBSERVE THE FOLDERS AND SEE THAT NOTES.INI AND DATA DIRECTORY REMAIN



III. Common issues when uninstalling Domino on windows server environment:

5. Missing uninstall.dll file > need to re-install the server or get this to other working server
6. Cannot uninstall Domino server since there are other opened Domino services (jcontroller error)
7. Installer issue

How to Install HCL Domino Server v11.0.1 on Red Hat Enterprise Linux (RHEL) System

I. Introduction

Red Hat Enterprise Linux Server (RHEL) is one of the supported platforms for Domino V11

This module will show how to setup a Domino V11 server on RHEL 7.4 in a just a few steps.

III. Download Information

Download the file from flexnet.

<https://hclsoftware.flexnetoperations.com/flexnet/operationsportal/logon.do>

II. System Requirement

https://support.hcltechsw.com/csm?id=kb_article&sysparm_article=KB0074573

Operating Systems

OS	Hardware	Bitness
Red Hat Enterprise Linux (RHEL) Server 8.x	x86-64	64-exploit
Red Hat Enterprise Linux (RHEL) Server 7.4+	x86-64	64-exploit

Hardware

Disk Space		
Components	Requirement	Applicable OS
	<p>Programs folder (/opt/hcl/domino): 1.5 GB minimum, 7.5 GB recommended.</p> <p>Data folder (/notes/data): 1 GB absolute minimum, recommended size must be determined by business usage requirements.</p> <p>Disk swap space: Same amount as physical</p> <p>RAM required: 2 times the physical RAM recommended</p>	<p>Applies to all AIX, Linux operating systems</p> <p>supported by the deliverable</p>

Memory

Components	Requirement	Applicable OS
	<p>768 MB Minimum</p> <p>2GB MB or more recommended per CPU</p>	<p>Apply to all operating systems supported by the deliverable</p>

III. Procedure on how to Install

Step 1: Install Domino V11.0.1. As user root upload Domino_1101_Linux_English.tar to i.e. /home/domino/install_files/Domino11 and unpack the archive with tar xvf command.

```
root@ip-10-134-106-191:/home/domino/install_files/Domino11
[root@ip-10-134-106-191 Domino11]# ls
Domino_11.0_Linux_English.tar
[root@ip-10-134-106-191 Domino11]# tar xvf Domino_11.0_Linux_English.tar
```

Step 2: cd linux64

```
[root@ip-10-134-106-191 Domino11]# ls
Domino_11.0_Linux_English.tar  linux64
[root@ip-10-134-106-191 Domino11]# cd linux64
[root@ip-10-134-106-191 linux64]# ls
install  responseFile  tools
[root@ip-10-134-106-191 linux64]#
```

Step 3 run ./install

```
[root@ip-10-134-106-191 linux64]# ./install

HCL Domino for Linux/Unix Install Program
-----
Preparing to install
Extracting the JRE from the installer archive...
Unpacking the JRE...
Extracting the installation resources from the installer archive...
Configuring the installer for this system's environment...
```

The installation wizard will start

HCL Domino for Linux/Unix Install Program

```
-----
Preparing to install
Extracting the JRE from the installer archive...
Unpacking the JRE...
Extracting the installation resources from the installer archive...
Configuring the installer for this system's environment...
Launching installer...
```

```
=====
HCL Domino                                (created with InstallAnywhere)
-----
```

```
Preparing CONSOLE Mode Installation...
```

```
=====
Introduction
-----
```

```
Welcome to the InstallAnywhere for HCL Domino
InstallAnywhere will install HCL Domino on your computer.
HCL Domino
HCL
https://www.hcl.com
Type 'back' to Previous or 'quit' to Cancel
```

```
[root@ip-10-134-106-191 linux64]# ./install

HCL Domino for Linux/Unix Install Program
-----
Preparing to install
Extracting the JRE from the installer archive...
Unpacking the JRE...
Extracting the installation resources from the installer archive...
Configuring the installer for this system's environment...

Launching installer...

=====
HCL Domino                                (created with InstallAnywhere)
-----

Preparing CONSOLE Mode Installation...

=====
Introduction
-----
```

Step 4: Follow the instructions on the screen. Depending on your hardware the installation process will take about 5-10 minutes.

Step 5: You will then see a message that tells you the following:

Congratulations. HCL Domino has been successfully installed to:

/opt/hcl/domino11/domino ← defined Domino Directory (program files)

Please, manually configure the Domino Server as follows:

- 1) Login as the appropriate user: domino
- 2) Change to data directory using the command: `cd /local/notesdata11` ← defined Data Directory
- 3) Configure the server using the command:
`/opt/hcl/domino11/domino/bin/server`

To configure server remotely, the remote server setup tools is required and you can use the command: `/opt/hcl/domino11/domino/bin/server -listen`

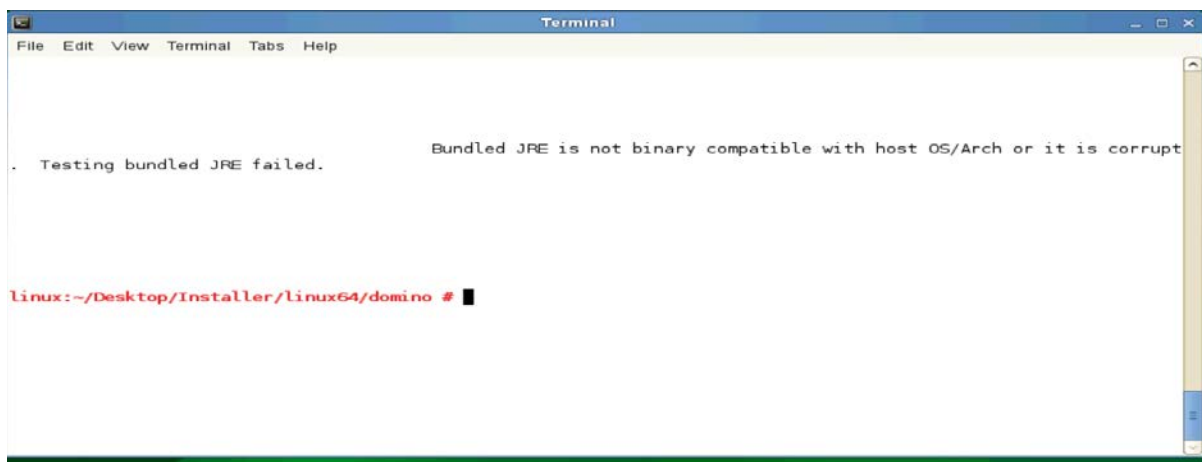
After issuing this command, additional instructions will appear for remote server setup. For additional details see the section 'Using the Domino Server Setup remotely' in the HCL Domino Administration Help Documentation.

The InstallAnywhere has successfully installed HCL Domino to
`/opt/hcl/domino11/domino`.

Step 6: After you install the program files for an HCL Domino server on a system, you can use either a Microsoft® Windows® client system or another Domino server to run the server setup program remotely. Running the server setup program from a Windows client is easier if the client has Domino Administrator installed — to run the program from a client without Domino Administrator, you need the Java™ runtime environment plus some files from the program directory of an installed Domino server.

IV. Common Issues when installing Domino on Linux

1. Error, "Bundled JRE is not binary compatible with host OS/Arch or it is corrupt. Testing bundled JRE failed."



Solution:

- Check if the OS is a supported version. Please see system requirements
- Add **data_UNIX_user = user@domain.com**
Add an @ in the middle of the user name and run the installer. The issue has something to do with the '@' sign.

2. When running the domino server you get: Please edit your shell's display environment variable to reflect an unlocked terminal that you would like to launch the Domino Setup Program on.

```
domino@ip-10-134-106-77:/local/notesdatadomino10
deutsch.dic      lschema.ldif      uk.dic
dfc              ltecmch1.dic      unknown.gif
dircat5.ntf      ltecmzh1.dic      updatesite.ntf
discussion10.ntf  magyar.dic         us.dic
doclbm7.ntf      mail10.ntf         userlicenses.ntf
doclbs7.ntf      mailbox.ntf        userreg.ntf
doclbw7.ntf      mailjrn.ntf        us.med
doladmin.ntf     movie.gif          webadmin.ntf
dolres.ntf       mtstore.ntf        websecuritystore.ntf
domadmin.ntf     nederlnd.dic       wpdic.dic
domcfg5.ntf      nedplus.dic        xmlschemas

[domino@ip-10-134-106-77 notesdatadomino10]$ /opt/ibm/domino/bin/server
/proc/sys/kernel/sem has been set to "250      256000  32      1024".
/proc/sys/net/ipv4/tcp_fin_timeout has been set to "15".
/proc/sys/net/ipv4/tcp_max_syn_backlog has been set to "16384".
/proc/sys/net/ipv4/tcp_tw_reuse has been set to "1".
/proc/sys/net/ipv4/ip_local_port_range has been set to "1024      65535".
./java -ss512k -Xmso5M -cp jhall.jar:cfgdomserver.jar:./ndext/ibmdirectoryservices.jar lotus.domino.setup.WizardManagerDomino -data /local/notesdatadomino10
*Warning all runtime debug info will be logged to /local/notesdatadomino10/setup
log.txt
Please edit your shell's DISPLAY environment variable to reflect an unlocked terminal
that you would like to launch the Domino Setup Program on.
[domino@ip-10-134-106-77 notesdatadomino10]$
```

Answer:

https://support.hcltechsw.com/csm?id=kb_article&sysparm_article=KB0024379

How to Upgrade HCL Domino v10.0.1 to v11.0.1 on Red Hat Enterprise Linux (RHEL) System

I. Introduction

This file will have the instructions on how to upgrade Domino 10.0.1 to Domino 11.0.1 in Linux OS.

Upgrading a Domino® server refers to installing a new release of Domino software.

II. Download Information

Download the file from flexnet.

<https://hclsoftware.flexnetoperations.com/flexnet/operationsportal/logon.do>

HCL Domino Server 11.0.1 for Linux English 732.58MB Mar 24, 2020

Domino_1101_Linux_English.tar

III. System Requirements

https://support.hcltechsw.com/csm?id=kb_article&sysparm_article=KB0077033

OS	Hardware	Bitness
Red Hat Enterprise Linux (RHEL) Server 8.x	x86-64	64-exploit
Red Hat Enterprise Linux (RHEL) Server 7.4+	x86-64	64-exploit
SUSE Linux Enterprise Server (SLES) 15.0+	x86-64	64-exploit
SUSE Linux Enterprise Server (SLES) 12.0+	x86-64	64-exploit
CentOS Server 8.x	x86-64	64-exploit
CentOS Server 7.4+	x86-64	64-exploit

Disk Space

Components	Requirement	Applicable OS
Server-64 bit	Programs folder: (opt/hcl/domino): 1.5 GB minimum, 7.5 GB recommended. Data folder (/notes/data): 1 GB absolute minimum, recommended size must be determined by business usage requirements.	Applies to all AIX, Linux operating systems supported by the deliverable

Disk swap space:
Same amount as physical
RAM required
2 times the physical RAM
recommended

Memory

Components	Requirement	Applicable OS
Server-64 bit	768 MB Minimum 2GB MB or more recommended per CPU	Apply to all operating systems supported by the deliverable

IV. Preparation on Upgrade

- Backup all Domino Data files, include transactional logs if appropriate.
- Check Domino server system requirements
- Download Domino latest installer
- Verify all system databases have inheritance turned on:
 - NAMES.NSF (StdR4PublicAddressBook)
 - LOG.NSF (StdNotesLog)
 - EVENTS4.NSF (StdR4Events)
 - ADMIN4.NSF (StdR4AdminRequests)

This is so the Design task can be utilized to refresh the system database designs with the Domino server down. If you skip this, later you may need to manually replace the design of some system databases using the Domino Administrator client.

V. Procedure for Upgrade

This is the easiest approach. This is an "in place" software upgrade of an existing server

- The server identity remains the same
- No change of underlying hardware or operating system
- If clustered... • upgrade one server at a time in the cluster
- Remember that ACLs and replication settings do not prevent designs from propagating in a cluster

1. Make sure the Domino server to be upgraded is shut down "cleanly" (no errors or hangs).
If the Domino server does not shut down cleanly:

a) Run nsd -kill.

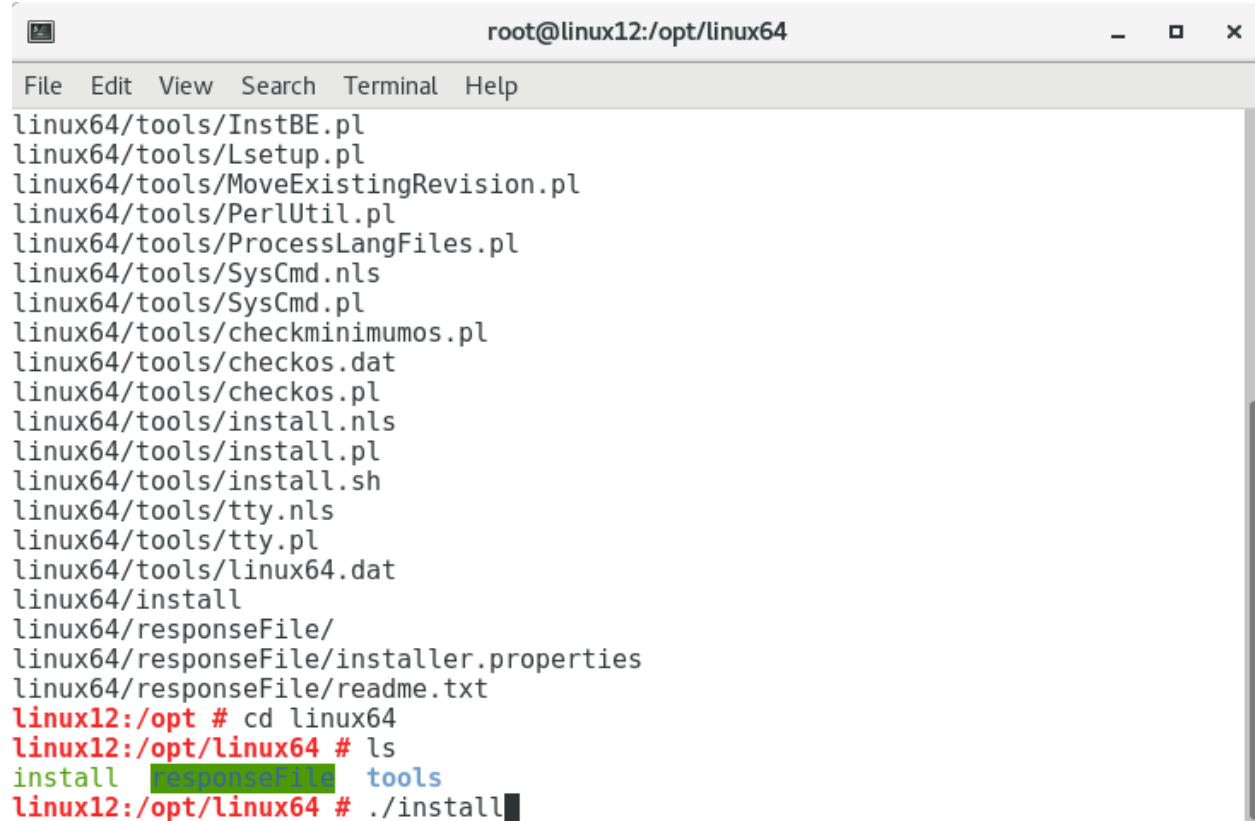
b) With the Domino server down, run a Domino maintenance task against a non-existent database name. This step flushes the transactional logs to disk and essentially simulate a clean Domino server shutdown.

2. Validate that there is no Domino task running in the background by issuing the ps command in the Linux terminal.

3. Untar the Domino 11.0.1 installer.

```
linux12:/opt # tar -xvf Domino_1101_Linux_English.tar
```

4. Install Domino 11.0.1



```
root@linux12:/opt/linux64
File Edit View Search Terminal Help
linux64/tools/InstBE.pl
linux64/tools/Lsetup.pl
linux64/tools/MoveExistingRevision.pl
linux64/tools/PerlUtil.pl
linux64/tools/ProcessLangFiles.pl
linux64/tools/SysCmd.nls
linux64/tools/SysCmd.pl
linux64/tools/checkminimumos.pl
linux64/tools/checkos.dat
linux64/tools/checkos.pl
linux64/tools/install.nls
linux64/tools/install.pl
linux64/tools/install.sh
linux64/tools/tty.nls
linux64/tools/tty.pl
linux64/tools/linux64.dat
linux64/install
linux64/responseFile/
linux64/responseFile/installer.properties
linux64/responseFile/readme.txt
linux12:/opt # cd linux64
linux12:/opt/linux64 # ls
install responseFile tools
linux12:/opt/linux64 # ./install
```

5. Point the Domino Program and Data directory to the previous Domino location.

```
root@linux12:/opt/linux64
File Edit View Search Terminal Help
Data directory. Warning: if you do not have an existing Domino server on your
system, please do not check the box below for the option to add data
directories only.

Install Data Directories Only for Partitioned Domino Server (Default: NO):

=====

Type 'back' to Previous or 'quit' to Cancel
PRESS <ENTER> TO CONTINUE:

=====

Program File Directory Name (Default: /opt/ibm/domino): █
```

Note: Make sure to use the same User name and Group Name as Notes when doing the upgrade.

6. Once the installer is finish, copy customized templates into place.

```
root@linux12:/opt/linux64
File Edit View Search Terminal Help
=====
Installation Complete for Manual ServerSetup
-----

Congratulations. HCL Domino has been successfully installed to:

/opt/ibm/domino

Please, manually configure the Domino Server as follows:
1) Login as the appropriate user: notes
2) Change to data directory using the command: cd /opt/ibm/notesdata
3) Configure the server using the command: /opt/ibm/domino/bin/server
   To configure server remotely, the remote server setup tools is required
   and you can use the command: /opt/ibm/domino/bin/server -listen'
   After issuing this command, additional instructions will appear for remote
   server setup. For additional details see the section 'Using the Domino Server
   Setup remotely' in the HCL Domino Administration Help Documentation.

The InstallAnywhere has successfully installed HCL Domino to /opt/ibm/domino.

PRESS <ENTER> TO EXIT THE INSTALLER: █
```

7. Run the design task to refresh the design of system databases.

Note: Ensure that inheritance is enabled on the system databases.

```
notes@linux12:/opt/ibm/notesdata
File Edit View Search Terminal Help
[054786:000002-00007FD03834D740] 06/17/2020 14:23:15 Informational, rebuilding
view - no container or index (reading /opt/ibm/notesdata/pubnames.ntf view note
Title:'($Certifiers)')
[054786:000002-00007FD03834D740] 06/17/2020 14:23:15 Informational, rebuilding
view - no container or index (reading /opt/ibm/notesdata/pubnames.ntf view note
Title:'($FileIdentifications)')
[054786:000002-00007FD03834D740] 06/17/2020 14:23:15 Informational, rebuilding
view - no container or index (reading /opt/ibm/notesdata/pubnames.ntf view note
Title:'($Holidays)')
[054786:000002-00007FD03834D740] 06/17/2020 14:23:16 Informational, rebuilding
view - no container or index (reading /opt/ibm/notesdata/pubnames.ntf view note
Title:'($ServerParameters)')
[054786:000002-00007FD03834D740] 06/17/2020 14:23:16 Informational, rebuilding
view - no container or index (reading /opt/ibm/notesdata/pubnames.ntf view note
Title:'($PoliciesExt)')

[054786:000002-00007FD03834D740] *****
*****
[054786:000002-00007FD03834D740] Do you want to upgrade the design of the Domino
Directory? This replaces the standard forms and views with ones from the templa
te.
[054786:000002-00007FD03834D740] (Yes/No)
█
```

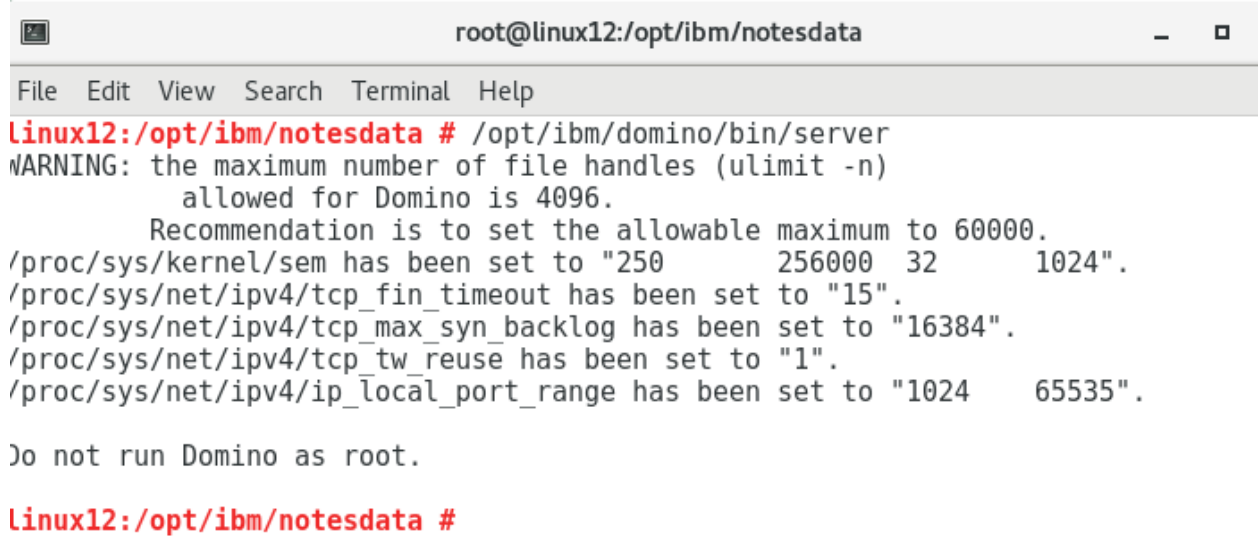
8. Run the updll task to rebuild views with design or collation changes.

Note: Use indirect files to save time.

9. Restart the Domino server.

VI. Common Issues on Domino upgrade

1. Do not run Domino as Root after upgrade.



```
root@linux12:/opt/ibm/notesdata
File Edit View Search Terminal Help
Linux12:/opt/ibm/notesdata # /opt/ibm/domino/bin/server
WARNING: the maximum number of file handles (ulimit -n)
        allowed for Domino is 4096.
        Recommendation is to set the allowable maximum to 60000.
/proc/sys/kernel/sem has been set to "250      256000  32      1024".
/proc/sys/net/ipv4/tcp_fin_timeout has been set to "15".
/proc/sys/net/ipv4/tcp_max_syn_backlog has been set to "16384".
/proc/sys/net/ipv4/tcp_tw_reuse has been set to "1".
/proc/sys/net/ipv4/ip_local_port_range has been set to "1024  65535".

Do not run Domino as root.

Linux12:/opt/ibm/notesdata #
```

Solution: Run the 'su' command to switch to notes user

2. HTTP JVM error:

```
HTTP Server: Java Virtual Machine loaded
HTTP JVM: java.lang.reflect.InvocationTargetException
HTTP JVM: at sun.reflect.NativeMethodAccessorImpl.invoke0(Native Method)
HTTP JVM: at
sun.reflect.NativeMethodAccessorImpl.invoke(NativeMethodAccessorImpl.java:62)
HTTP JVM: at
sun.reflect.DelegatingMethodAccessorImpl.invoke(DelegatingMethodAccessorImpl.java:43)
HTTP JVM: at java.lang.reflect.Method.invoke(Method.java:498)
HTTP JVM: at
com.ibm.domino.http.bootstrap.BootstrapOSGiClassLoader.loadClassFromBundle(BootstrapOSGiClassLoader.java:136)
HTTP JVM: at
com.ibm.domino.http.bootstrap.BootstrapOSGiClassLoader.launchOSGiFramework(BootstrapOSGiClassLoader.java:82)
JVM: at
com.ibm.domino.http.bootstrap.BootstrapOSGiClassLoader.loadClass(BootstrapOSGiClassLoader.java:63)
HTTP JVM: at java.lang.ClassLoader.loadClass(ClassLoader.java:872)
HTTP JVM: at
com.ibm.domino.http.bootstrap.BootstrapClassLoader.findClass(BootstrapClassLoader.java:79)
HTTP JVM: Caused by:
HTTP JVM: java.lang.ClassNotFoundException: No class loader available for the bundle:
com.ibm.domino.xsp.adapter.osgi_10.0.1.20191004-1021 [123]
HTTP JVM: at
org.eclipse.osgi.internal.framework.EquinoxBundle.loadClass(EquinoxBundle.java:579)
```

```

HTTP JVM: ... 9 more
HTTP JVM: java.lang.ClassNotFoundException
HTTP JVM: at java.lang.ClassLoader.findClass(ClassLoader.java:508)
HTTP JVM: at java.lang.ClassLoader.loadClassHelper(ClassLoader.java:944)
HTTP JVM: at java.lang.ClassLoader.loadClass(ClassLoader.java:889)
HTTP JVM: at
com.ibm.domino.http.bootstrap.BootstrapOSGiClassLoader.loadClass(BootstrapOSGiClassLoade
r.java:68)
HTTP JVM: at java.lang.ClassLoader.loadClass(ClassLoader.java:872)
HTTP JVM: at
com.ibm.domino.http.bootstrap.BootstrapClassLoader.findClass(BootstrapClassLoader.java:79)
*****
*****

WARNING: Xsp Initialization error - Could not load class or methods
WARNING: XPages/Traveler/Rest Web Services will not run until this is resolved
*****
*****

HTTP Server: Started

```

Solution: Remove all v10.0.1 jar files (and folders) from the following folder:
....domino/notes/latest/linux/osgi/shared/eclipse/plugins

Beneath is a small set of files/folders:

```

com.ibm.xsp.extsn_10.0.1.20191004-1021
com.ibm.xsp.extsn_11.0.0.20191120-0552
com.ibm.xsp.mum_10.0.1.20191004-1021
com.ibm.xsp.mum_11.0.0.20191120-0552
com.ibm.xsp.theme.bootstrap_10.0.1.v00_00_20191004-1021.jar
com.ibm.xsp.theme.bootstrap_11.0.0.v00_00_20191120-0552.jar
com.ibm.xsp.theme.oneui.idx_10.0.1.20191004-1021
com.ibm.xsp.theme.oneui.idx_11.0.0.20191120-0552
com.ibm.xsp.theme.oneuiv302_10.0.1.20191004-1021
com.ibm.xsp.theme.oneuiv302_11.0.0.20191120-0552
net.fortuna.ical4j_1.0.0.20191004-1021
net.fortuna.ical4j_1.0.0.20191120-0552
org.apache.common.dbcp_1.0.0.20191004-1021.jar
org.apache.common.dbcp_1.0.0.20191120-0552.jar.apache.james.mime4j_0.6.0.20191004-
1021
org.apache.james.mime4j_0.6.0.20191120-0552
org.apache.wink_1.1.2.20191004-1021
org.apache.wink_1.1.2.20191120-0552

```

How to Uninstall HCL Domino Server v11.0.1 to Red Hat Enterprise Linux (RHEL) System

I. Introduction

Red Hat Enterprise Linux Server (RHEL) is one of the supported platforms for Domino V11

This module will show how to uninstall a Domino V11 server on RHEL 7.4 in a just a few steps.

II. How to Uninstall

Step 1: Make a note of your Program Directory and Data Directory. Example below:

Old Program Directory: /opt/ibm/domino

Data Directory: /local/notesdata

Step 2: Uninstall Domino

It is NOT recommended using the uninstall program shipped with Domino. The simplest way to uninstall Domino is to delete the Domino Program Directory. This is accomplished by using an account with elevated privileges (root), then changing to the parent directory and using the rm command to remove the domino directory.

```
#> su                (change to the super user, you will need to enter the password for root)
#> cd /opt/ibm        (change directory to the Domino program parent)
#> ls -l              (list the directory contents)
#> rm -rf domino      (remove the Domino Program Directory and all subdirectory content)
#> ls -al             (list all contents to verify the Domino Program Directory has been deleted)
```



```
devinolson — demoserver1@dleapt05:/opt/ibm — ssh demoserver1@dleapt05....
[
[demoserver1@dleapt05 ~]$ su
[Password:
[[root@dleapt05 demoserver1]# cd /opt/ibm/
[[root@dleapt05 ibm]# ls -l
total 0
[drwxr-xr-x 4 root root 50 Sep 11 11:05 domino
[[root@dleapt05 ibm]# rm -rf domino
[[root@dleapt05 ibm]# ls -al
total 0
drwxrwxr-x  2 root root  6 Sep 18 16:08 .
drwxr-xr-x  4 root root 28 Sep 18 16:06 ..
[[root@dleapt05 ibm]#
```

How to Install HCL Domino Server v11.0.1 on IBMi System using RSTLICPGM?

I. Introduction

Using the Restore License Program (RSTLICPGM) CL command requires you to have the save files of QNOTES and QNOTESRL on the IBMi Machine. The save file of QNOTESAP is required only if you want to install the C API option

II. Download Information

Download the file from flexnet.

<https://hclsoftware.flexnetoperations.com/flexnet/operationsportal/logon.do>

III. System Requirement

Hardware:

System models

The following Power and System i models are supported:

- IBM Power™ 520 to IBM Power™8
- System i 9407-515, 9405-520, 9406-520 and above to 9406-595
- System i 9406-800, 9406-810, 9406-825, 9406-870, 9406-890

The following Power and System i models are NOT supported:

- System i 9406-270, 9406-820, 9406-830, 9406-840, 9406-SB2, 9406-SB3, 9406-530, 9406-53S

Memory requirements

- 512 MB or more minimum
- 512 MB or more per Domino server

Disk requirements

- 4 GB of free space minimum

Software:

IBM i Software	i 7.2	i 7.3
i Operating System Licensed Internal Code	5770SS1 5770999	5770SS1 5770999
Required Individual PTFs ⁽¹⁾	(1)	(1)
Host Servers	5770SS1 Option 12	5770SS1 Option 12
Qshell	5770SS1 Option 30	5770SS1 Option 30
Portable App Solutions Environment	5770SS1 Option 33	5770SS1 Option 33
TCP/IP Connectivity Utilities	5770TC1 Option *BASE	5770TC1 Option *BASE
IBM HTTP Server ⁽²⁾	5770DG1 Option *BASE	5770DG1 Option *BASE
IBM Developer Kit for Java J9 ⁽³⁾	5770JV1 Option *BASE 5770JV1 Option 16 ⁽⁵⁾ 5770JV1 Option 17	5770JV1 Option *BASE 5770JV1 Option 16 5770JV1 Option 17
IBM i Access Family ⁽⁴⁾	5770XW1 Option *BASE 5770XW1 Option 1	5770XW1 Option *BASE 5770XW1 Option 1

⁽¹⁾ See the Article [Domino for IBM i \(i5/OS\): What System Fixes are Required?](#) for the latest information on required PTFs. Always have the latest PTF levels applied to your system. Refer to the Preventive Service Planning (PSP) Web site for the latest cumulative, group and individual PTFs available for the release: http://www-912.ibm.com/s_dir/sline003.nsf/sline003home .

⁽²⁾ Required if you plan to use the IBM HTTP Server plug-in for Domino or any Web services.

⁽³⁾ 5761JV1 Option 11 and 12 are available with IBM i 6.1 and 7.1 media. IBM i 7.2 and 7.3 does not support 5761JV1. It has 5770JV1 instead. From IBM i 7.3, JDK 6 (Option 11&12) is dropped and the default is JDK 8 (Option 16&17).

⁽⁴⁾ Install these options if you plan to manage your Domino environment using i Navigator, the graphical user interface for managing i. The latest service pack is available at: <http://www.ibm.com/systems/i/software/access/windows/casp.html> .

IV. Procedure on how to Install

Step 1: Extract the objects from the File that you have downloaded from Flexnet.

Suggestion: Create a new Folder in the C Drive and Extract file on it.

Step 3: Open your IBMi and Create your library using the command: CRTLIB LIB(<Library Name>)
ex. CRTLIB LIB(MYLIB)

```
Selection or command
==> CRTLIB LIB(MYLIB)

F3=Exit   F4=Prompt   F9=Retrieve
F23=Set initial menu
```

Step 4: Create a Save File, this will become the container which holds the code. Use the command: CRTSAVF FILE(<Library Name>/<SAVF NAME>).

- a. Create a Save File for QNOTES.
ex. CRTSAVF FILE(MYLIB/QNOTES)

```
Selection or command
==> CRTSAVF FILE(MYLIB/QNOTES)

F3=Exit   F4=Prompt   F9=Retrieve
F23=Set initial menu
```

- b. Create a Save File for QNOTESAP.
ex. CRTSAVF FILE(MYLIB/QNOTESAP)

```
Selection or command
==> CRTSAVF FILE(MYLIB/QNOTESAP)

F3=Exit   F4=Prompt   F9=Retrieve
F23=Set initial menu
```

- c. Create a Save File for QNOTESRL.
ex. CRTSAVF FILE(MYLIB/QNOTESRL)

```
Selection or command  
==> CRTSAVE FILE(MYLIB/QNOTESRL)
```

```
F3=Exit    F4=Prompt    F9=Retrieve  
F23=Set initial menu
```

Step 5: Go to your Windows System and FTP the files that you extracted.

Suggestion: Change first the directory to the New Folder that you created. (Or where you extracted the Files (QNOTES, QNOTESAP and QNOTESRL).

Ex.

```
C:\>cd Dom1101
```

```
C:\InstallerDomino7>ftp <hostname >
```

```
Connected to <hostname>.
```

```
220-QTCP at ACME.HCL.COM.
```

```
220 Connection will close if idle more than 5 minutes.
```

```
User (hostname:(none)): QSECOFC
```

```
331 Enter password.
```

```
Password:
```

```
230 ITSouser logged on.
```

```
ftp> bin
```

```
200 Representation type is binary IMAGE.
```

```
ftp> put qnotes mylib/qnotes
```

```
200 PORT subcommand request successful.
```

```
150 Sending file to member QNOTES in file QNOTES in library MYLIB.
```

```
226 File transfer completed successfully.
```

```
ftp: 896016 bytes sent in 0.13 Seconds 6892.43Kbytes/sec.
```

```
ftp> put qnotesap mylib/qnotesap
```

```
200 PORT subcommand request successful.
```

```
150 Sending file to member QNOTESAP in file QNOTESAP in library MYLIB.
```

```
226 File transfer completed successfully.
```

```
ftp: 896016 bytes sent in 0.13 Seconds 6892.43Kbytes/sec.
```

```
ftp> put qnotesrl mylib/qnotesrl
```

```
200 PORT subcommand request successful.
```

```
150 Sending file to member QNOTESRL in file QNOTESRL in library MYLIB.
```

```
226 File transfer completed successfully.
```

```
ftp: 1195459584 bytes sent in 138.26 Seconds 8646.52Kbytes/sec.
```

Suggestion: Use the command **hash**, for you to have a loading screen.

Step 6: You must set an environment variable for a Domino Messaging, Utility, or Enterprise installation using the following command where 0=Messaging, 1=Utility, and 2=Enterprise:

ADDENVVAR ENVVAR(DOMINO_INSTALL_TYPE) VALUE(0) – Messaging

ADDENVVAR ENVVAR(DOMINO_INSTALL_TYPE) VALUE(1) – Utility

ADDENVVAR ENVVAR(DOMINO_INSTALL_TYPE) VALUE(2) – Enterprise

Step 7: Restore the Files using the following commands:

RSTLICPGM LICPGM(5733D11) DEV(*SAVF) OPTION(*BASE) SAVF(MYLIB/QNOTES) > For the Base Install

RSTLICPGM LICPGM(5733D11) DEV(*SAVF) OPTION(1) SAVF(MYLIB/QNOTESAP) -> For C API

RSTLICPGM LICPGM(5733D11) DEV(*SAVF) OPTION(10) SAVF(MYLIB/QNOTESRL) -> For v11.0.0

RSTLICPGM LICPGM(5733D11) DEV(*SAVF) OPTION(11) SAVF(MYLIB/QNOTESRL) -> For v11.0.1

Step 8: Verify if the installation was successful using this command: **DSPSFWRSC**

Ex.

```
5733D11 *BASE 5050 HCL Domino 11.0
5733D11 *BASE 2924 HCL Domino 11.0
5733D11 1 5050 HCL Domino 11.0: C API
5733D11 11 5050 HCL Domino 11.0: Release 11.0.1
5733D11 11 2924 HCL Domino 11.0: Release 11.0.1
```

V. Common issues when installing Domino on IBMi

1. Getting LNT2025 when issuing RSTLICPGM to install Domino Code.

Solution/s:

To resolve the issue you must first define the desired Domino type by setting the following

"DOMINO_INSTALL_TYPE" environment variable:

ADDENVVAR ENVVAR(DOMINO_INSTALL_TYPE) VALUE(2)

Note: Replace the value with a "0" if setting up a message server, with a "1" if setting up a utility server and with a "2" if setting up an enterprise server

2. Cannot allocate object QGNNINDS when issuing RSTLICPGM.

Solution/s:

-This issue is happening because somebody is locking the panel group (QGNNINDS) resulting the install to fail/break. To resolve the issue, check if someone is using or on WRKDOMSVR and release it.

-You can issue the command: **WRKOBJLCK OBJ(QSYS/QGNNINDS) OBJTYPE(*PNLGRP)** to check who is accessing the WRKDOMSVR command.

How to Upgrade HCL Domino Server to v11.0.1 in IBMi Systems

I. Introduction

This document provides minimum system requirements for HCL Domino 11.0.1. Higher maintenance levels, such as fix packs and service packs, may be supported as they become available.

II. Download information

Download the file from flexnet.

<https://hclsoftware.flexnetoperations.com/flexnet/operationsportal/logon.do>

III. System Requirement

https://support.hcltechsw.com/csm?id=kb_article&sysparm_article=KB0077033

Operating Systems

OS	Hardware	Bitness
IBM i v7 r2		64-exploit
IBM i v7 r3		64-exploit

Hardware Requirements

Use this information as a general guideline. The requirements for your environment may be different. Use the IBM Systems Workload Estimator for sizing IBM Power Systems for Domino. The Estimator is available at the following Web site:

<https://wle.mybluemix.net/wle/EstimatorServlet>

The following IBM Power® Systems, System i, eServer and iSeries models are supported to run Domino 9.0.x. IBM Power Systems unify IBM's integrated platform, IBM System i™, with its UNIX operating system platform, IBM System p™. For more information see:

<http://www.ibm.com/systems/power/>

System models

The following Power and System i models are supported:

- IBM Power™ 520 to IBM Power™8
- System i 9407-515, 9405-520, 9406-520 and above to 9406-595
- System i 9406-800, 9406-810, 9406-825, 9406-870, 9406-890

The following Power and System i models are NOT supported:

- System i 9406-270, 9406-820, 9406-830, 9406-840, 9406-SB2, 9406-SB3, 9406-530, 9406-53S

Memory requirements

- 512 MB or more minimum
- 512 MB or more per Domino server

Disk requirements

- 4 GB of free space minimum

Software Requirements

Required and optional software

The Collaboration and Social Software for IBM i Compatibility Guide contains more information about products supported on IBM i.

Domino Software

Domino Software	Install Resource ID and Option
HCL Domino 11.0	5733D11 *BASE (Required)
HCL Domino 11.0: C API ⁽¹⁾	5733D11 Option 1
HCL Domino 11.0: Release 11.0.1	5733D11 Option 11

⁽¹⁾ Install this option if you run any application that uses the C API interfaces. The C API option is not multi-version capable.

Use the Display Software resources (DSPSFWRSC) command to list the installed software. The Resource ID or Licensed Program (LICPGM) number for Domino is "5733D11" where "xx" represents the Domino version and release level. This value is different from the Lotus Passport Advantage product ID, for example 5724E62 for Domino 8.5.0 and 5724Z10, 5724Z14 for Domino 8.5.1. While both values can be used to refer to the Lotus Domino product, the Resource ID (LICPGM value) is specific to IBM i and licensed program installation.

IBM i Software

IBM i Software	i 7.2	i 7.3
i Operating System	5770SS1	5770SS1
Licensed Internal Code	5770999	5770999
Required Individual PTFs ⁽¹⁾	⁽¹⁾	⁽¹⁾
Host Servers	5770SS1 Option 12	5770SS1 Option 12
Qshell	5770SS1 Option 30	5770SS1 Option 30
Portable App Solutions Environment	5770SS1 Option 33	5770SS1 Option 33
TCP/IP Connectivity Utilities	5770TC1 Option *BASE	5770TC1 Option *BASE
IBM HTTP Server ⁽²⁾	5770DG1 Option *BASE	5770DG1 Option *BASE

IBM Developer Kit for Java J9 ⁽³⁾	5770JV1 Option *BASE 5770JV1 Option 16 ⁽⁵⁾ 5770JV1 Option 17	5770JV1 Option *BASE 5770JV1 Option 16 5770JV1 Option 17
IBM i Access Family ⁽⁴⁾	5770XW1 Option *BASE 5770XW1 Option 1	5770XW1 Option *BASE 5770XW1 Option 1

IV. Upgrade Procedure

Step 1: Install the code for V11.0.1. Check this article for the Installation process:

https://support.hcltechsw.com/csm?id=kb_article&sysparm_article=KB0078802

Step 2: Issue the command: UPDDOMSVR SERVER(<Server Name>) TORLS('11.0.1')

Ex.

```
Selection or command
==> UPDDOMSVR SERVER(DOM901)

F3=Exit   F4=Prompt   F9=Retrieve
F23=Set initial menu
```

Note: If you didn't put TORLS(<Release>) parameter, then it will use the latest release that is installed in the system.

Step 3 (Optional): Verify if the Server is already updated by going back to the WRKDOMSVR then press F11. You will noticed that the Domino Release will be changing to v11.0.1

Step 4: Once the server is already done on updating the version. Start the server and accept the upgrade by typing Yes.

```
[194932:60102:00002-00000032] *****
*****
[194932:60102:00002-00000032] Do you want to upgrade the design of the Domino
Directory? This replaces the standard forms and views with ones from the tem
plate.
[194932:60102:00002-00000032] (Yes/No)
Enter a Domino subcommand.
==> _
```

Note: If you have multiple server in the LPAR and they are on the same Domain only the Admin Server will get this update.

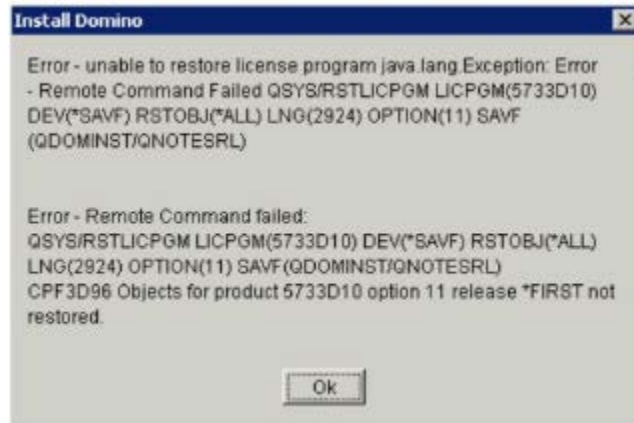
V. Common issues when upgrading Domino on IBMi

1. How to check the complete error when performing an upgrade?

Solution:

In the error line (usually appears in white) place the cursor and press F1 then F10.

2. Some installation may encounter the issue via the .exe file or in the green screen:



Solution:

You must set an environment variable for a Domino Messaging, Utility, or Enterprise installation using the following command where 0=Messaging, 1=Utility, and 2=Enterprise:

ADDENVVAR ENVVAR(DOMINO_INSTALL_TYPE) VALUE(0) – Messaging

ADDENVVAR ENVVAR(DOMINO_INSTALL_TYPE) VALUE(1) – Utility

ADDENVVAR ENVVAR(DOMINO_INSTALL_TYPE) VALUE(2) – Enterprise

How to Uninstall HCL Domino Server v11 on IBMi System using CFGDOMSVR

I. Introduction

The Configure Domino Server (CFGDOMSVR) command allows you to remove the Domino server on the IBMi Machine.

II. Preparation to Uninstall

- The user that will uninstall the server should have secofc access to the server.
- The server to be uninstalled must be fully shutdown.

III. How to Uninstall

Step 1: Issue "CFGDOMSVR" then press enter.

```
Selection or command  
==> CFGDOMSVR
```

Step 2: Input the name of the Domino server to be deleted and select the option "*REMOVE", then press enter.

Ex. Server name is "TIMTEST"

```
Configure Domino Server (CFGDOMSVR)  
  
Type choices, press Enter.  
  
Server name . . . . . TIMTEST  
_____  
_____  
_____  
Option . . . . . *REMOVE *FIRST, *ADD, *REMOVE
```

Step 3: Once done you will see the message "Command CFGDOMSVR ended successfully." and when you check the server under WRKDOMSVR the server will no longer exist.

```
Selection or command  
==> _____  
  
F3=Exit F4=Prompt F9=Retrieve F1  
F23=Set initial menu  
Command CFGDOMSVR ended successfully.  
MA A
```


Migration of Domino Server from One Machine to Another

OS Level Method

This process will require users to migrate there servers by moving the databases and files through OS Level move.

1. Turn off replication and mail routing to the server that is being rebuilt or reinstalled.
2. Make a complete backup of the original Domino server. The location of the program directory is identified in the NOTES.INI setting `NotesProgram=`.
3. Create the `\domino` and `\domino\data` directories on the new server.
4. Move all the data files from the old computer to the appropriate place on the new computer. The location of the data directory is identified in the NOTES.INI setting `Directory=`. Data files include:
 - Any file with the filename extension `.NSF`
 - Server ID file
 - Administrator ID file
 - Certificate ID file
 - Domino Directory for the server (`NAMES.NSF`)
 - `ADMIN4.NSF` (Administration Requests Database)
 - All templates (files with the filename extension `.NTF`)

Note: It is important to copy `CERTLOG.NSF` because it is used for security purposes and for user maintenance.

5. Move all user mail files. By default, the user mail files are stored in the `Notes\Data\Mail` directory.
6. Move all other databases that were created on the original Domino server.
7. Install the Domino server software on the new computer by following the instructions in the Domino server installation guide.

When you install the Domino server software, use the original `SERVER.ID`, `ADMIN.ID` and `CERT.ID` files. Remember to use the same Domino server and Domain names. When the Domino installation begins, you may see a message indicating that the Microsoft Windows Registry needs to modify some settings that are still present from the previous installation. Click Yes to correct this.

Note: On Microsoft Windows platforms, use `\domino` and `\domino\data` as the install directories. (If you are upgrading the server and, at the same time moving it from one computer to another, install the new server software.)

8. Disconnect the new computer from the network. Using removable media, copy the file NOTES.INI from the old server and place it in the Domino Directory on the new server. Launch the new server to ensure that it was installed and configured correctly. The Notes® client should not launch at this time.
9. Shut down the new server.
10. When the new server has all its files, shut down the old Domino server before bringing up the new Domino server with the same name. Put the old server's IP address on the new server and then connect the new server to the network.
11. Start the Domino server on the new computer.

Replication Method

This process required the users to migrate the server without shutdown, this is used for those companies that requires minimum downtime.

Legends:

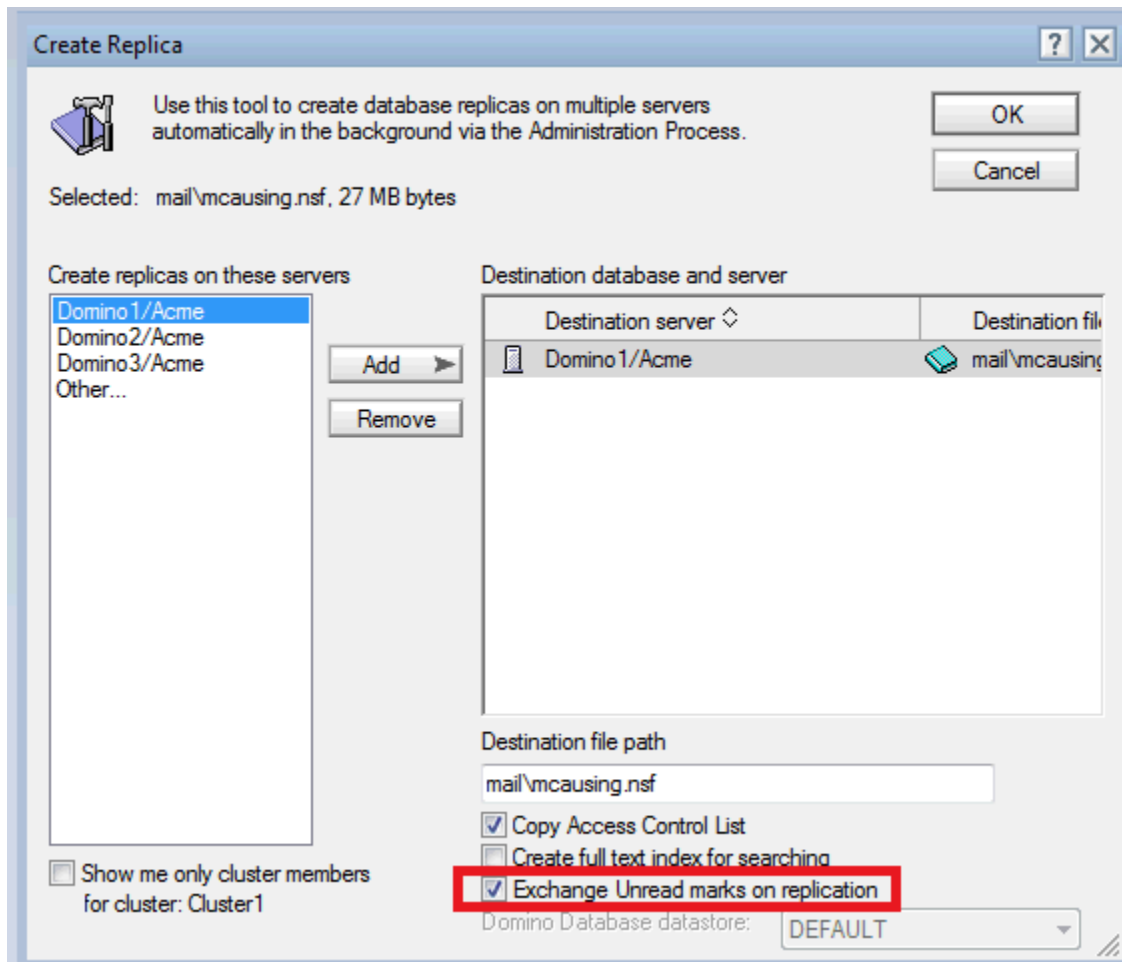
OLD server : original domino server

NEW server: dummy domino server

1. Register a new dummy server (NEW Server) and copy the server id that will be generated to the new server machine.
2. In the new machine, install NEW domino server **following the same folder structure of the original server**. During setup choose "Set up an additional server" and point it to the server id from step1.
3. Create connection documents for the two servers (OLD and NEW). This will be used for replication. (Make the interval short)
4. In the server document of NEW server go to Security >Server Access >Create new replicas and add the OLD server.
5. NEW server should have a reader access (ACL) to all databases to be replicated. So if you are using the "LocalDomainServers" group, you should make sure that NEW server is a member of that group.
6. Replicate names.nsf to both servers double check if the changes are replicated.
7. Add ADMINP_EXCHANGE_ALL_UNREAD_MARKS=1 in the notes.ini of OLD server

8. (Test) Create a new replica of one database via Select Database > New > Replica(s). This will use adminp so make sure adminp process is running.

Make sure that you check "Exchange Unread marks on replication". This will make sure that unread marks are the same in the new server. Please note that the amount of time to perform the initial replication by the administration process will increase due to the additional work required to exchange all the unread marks.



9. If successful, then you can create new replicas of multiple databases. You can select multiple Databases > >New > Replica(s). We recommend to create new replicas in batches to minimize network traffic.

10. After replicating all databases, shutdown both servers. Copy the notes.ini and server id from the original server and replace the one in the NEW server. Please take note that notes.ini is located in the domino program directory and server is in the data directory.

11. Change the hostname and IP address of the new server machine.

12. Start the server and you should be able to see the original server name when you issue the command "show server".

13. Test the server for connections, mail routing, etc.

Notes:

- If the Network Configuration changes, be sure to update the Server document. If the **Net Address** field on the Server document contains a server IP address, update this field if a new computer with a different IP address is installed.
- Check for Directory Links when performing an upgrade/move.
- Check for any OS level junctions or symbolic links that are defined. Ensure new symbolic links are created on the new server or the files for those links become part of the data directory.
- If the server name is changed, ensure that all encrypted databases are decrypted before copying the files to the new server.
- When moving servers between different operating system platforms, use FTP to relocate the databases or mail files to ensure the codepages are not corrupted. In some configurations, OS copy has caused database corruption.
- If you are moving a server from one machine to another and the drive mapping changes, for example, from drive C to drive D, change the following parameters in the file NOTES.INI:

```
Directory=d:\Domino\Data
```

```
NotesProgram=d:\Domino
```

- Perform a search in the server's NOTES.INI file to ensure that these parameters are changed appropriately. Perform a "find" (CTRL + F) on the old drive references and make changes as appropriate.

Note: If you change the server's name when you move it to the new computer, you can notify users to make the appropriate change to their Location documents, or you can make that change for them.

- When moving a server from a Microsoft™ Windows™ platform to a UNIX™ platform, always use the Domino server to replicate the database, primarily because this does not replicate the incompatible view indexes to the new platform.
- When you are moving a server from a Microsoft Windows platform to a UNIX platform, investigate and prepare issues with case-sensitivity for file names and paths.

Conclusion

If you are new to Domino, hopefully this white paper has enabled you to help yourself with specific Domino installation and upgrade questions. It's not meant to be a comprehensive guide, so be sure to consult the additional resources linked in the section below for more detailed solutions.

References:

Upgrading to HCL Notes and Domino 11 (upgrade guide)

https://support.hcltechsw.com/csm?id=kb_article&sysparm_article=KB0077811

Download the file from flexnet.

<https://hclsoftware.flexnetoperations.com/flexnet/operationsportal/logon.do>

System Requirement

https://support.hcltechsw.com/csm?id=kb_article&sysparm_article=KB0077033

Unable to start as a service > Check the notes.ini if the server controller is enabled. See the following parameters: ServerController=1, TCPIP_ControllerTcpIpAddress=10.10.10.5:2050

https://support.hcltechsw.com/csm?id=kb_article&sysparm_article=KB0035321

HCL Domino 11.0 Detailed System Requirements

https://support.hcltechsw.com/csm?id=kb_article&sysparm_article=KB0074573

Setting up a Domino server on a UNIX-based system

https://support.hcltechsw.com/csm?id=kb_article&sysparm_article=KB0024379

Domino for IBM i (i5/OS): What System Fixes are Required?

https://support.hcltechsw.com/csm?id=kb_article&sysparm_article=KB0026574

Roadmap to IBM i Preventive Service Planning Documentation

http://www-912.ibm.com/s_dir/sline003.nsf/sline003home

IBM i Access - Windows

<http://www.ibm.com/systems/i/software/access/windows/casp.html>

IBM Workload Estimator 2019.1.1

<https://wle.mybluemix.net/wle/EstimatorServlet>

<http://www.ibm.com/systems/power/>

How to Install HCL Domino Server v11.0.1 on an IBMi System using RSTLICPGM?

https://support.hcltechsw.com/csm?id=kb_article&sysparm_article=KB0078802

Authors

NA L2 Engineers

Roberto Dela Rosa-roberto.delarosa@pnp-hcl.com

Jojet Tarantan- jojet.tarantan@pnp-hcl.com

Charles Eliot Miranda-cemiranda@pnp-hcl.com

Redgie Geronimo- redgie.geronimo@pnp-hcl.com

Christian Sinfuego-christians@pnp-hcl.com

Dan Homer De Guzman-danhomer.deguzman@pnp-hcl.com

Paul Kevin Villorente-paulkevin.v@pnp-hcl.com

Monique Gonzaga-monique.gonzaga@pnp-hcl.com

Raphael Vinzon- johnraphael.vinzon@pnp-hcl.com